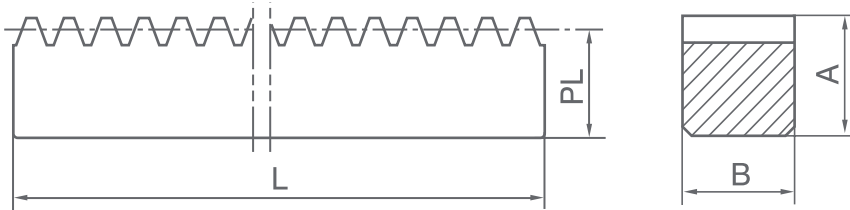




Machined Gear Racks

Standard Face Width



14 1/2°
Pressure Angle

Catalog Number	DP	B	A	PL	wt Lbs
145SR3x2	3	3	1 1/2	1.167	24.0
145SR3x4	3	3	1 1/2	1.167	48.0
145SR3x6	3	3	1 1/2	1.167	72.0
145SR4x2	4	2	1 1/2	1.250	17.4
145SR4x4	4	2	1 1/2	1.250	34.8
145SR4x6	4	2	1 1/2	1.250	52.2
145SR4x2B	4	2	2	1.750	23.6
145SR4x4B	4	2	2	1.750	47.2
145SR4x6B	4	2	2	1.750	70.8
145SR5x2	5	1 3/4	1 1/4	1.050	12.8
145SR5x4	5	1 3/4	1 1/4	1.050	25.6
145SR5x6	5	1 3/4	1 1/4	1.050	38.4
145SR5x2B	5	1 3/4	1 1/2	1.300	16.0
145SR5x4B	5	1 3/4	1 1/2	1.300	32.0
145SR5x6B	5	1 3/4	1 1/2	1.300	48.0
145SR6x2	6	1 1/2	1	0.833	8.6
145SR6x4	6	1 1/2	1	0.833	17.2
145SR6x6	6	1 1/2	1	0.833	25.8
145SR6x2B	6	1 1/2	1 1/2	1.333	13.8
145SR6x4B	6	1 1/2	1 1/2	1.333	27.6
145SR6x6B	6	1 1/2	1 1/2	1.333	41.4
145SR8x2	8	1 1/4	3/4	0.625	5.2
145SR8x4	8	1 1/4	3/4	0.625	10.4
145SR8x6	8	1 1/4	3/4	0.625	15.6
145SR8x2B	8	1 1/4	1 1/4	1.125	9.8
145SR8x4B	8	1 1/4	1 1/4	1.125	19.6
145SR8x6B	8	1 1/4	1 1/4	1.125	29.4
145SR10x2	10	1	5/8	0.525	3.6
145SR10x4	10	1	5/8	0.525	7.2
145SR10x6	10	1	5/8	0.525	10.8
145SR10x2B	10	1	1	0.900	6.0
145SR10x4B	10	1	1	0.900	12.0
145SR10x6B	10	1	1	0.900	18.0
145SR12x2	12	3/4	1/2	0.417	2.0
145SR12x4	12	3/4	1/2	0.417	4.0
145SR12x6	12	3/4	1/2	0.417	6.0
145SR12x2B	12	3/4	3/4	0.667	3.4
145SR12x4B	12	3/4	3/4	0.667	6.8
145SR12x6B	12	3/4	3/4	0.667	10.2
145SR16x2	16	5/16	5/16	0.250	0.50
145SR16x4	16	5/16	5/16	0.250	1.00
145SR16x6	16	5/16	5/16	0.250	1.50
145SR16x2B	16	1/2	1/2	0.438	1.52
145SR16x4B	16	1/2	1/2	0.438	3.04
145SR16x6B	16	1/2	1/2	0.438	4.56
145SR20x2	20	3/8	3/8	0.325	0.84
145SR20x4	20	3/8	3/8	0.325	1.68
145SR20x6	20	3/8	3/8	0.325	2.52
145SR24x2	24	1/4	1/4	0.208	0.38
145SR24x4	24	1/4	1/4	0.208	0.76
145SR24x6	24	1/4	1/4	0.208	1.14



Special Note

The racks produced are of the following characteristics of high precision:

- In the whole length of 6ft, unstraight degree is within 0.01", no matter where measurement is taken at any place of the rack.
- Unverticality of each vertical plane of the rack is less than 0.01".
- Error added up to circumferential pitch of any teeth is less than 0.01".



Machined Gear Racks

Standard Face Width



20°
Pressure Angle

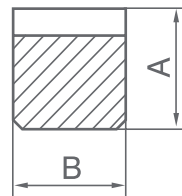
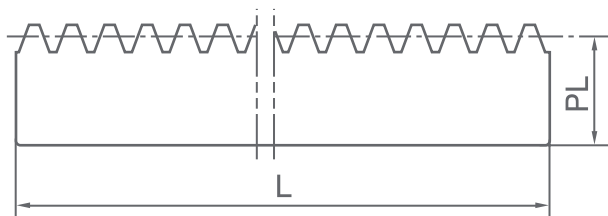
Special Note

The racks produced are of the following characteristic of high precision:

-In the whole length of 6ft, unstraight degree is within 0.01", no matter where the measurement is taken at any place of the rack.

-Unverticality of each vertical plane of the rack is less than 0.01".

-Error added up to circumferential pitch of any teeth is less than 0.01".



Catalog Number	DP	B	A	PL	wt Lbs
20SR3x2	3	3	1 1/2	1.167	24.0
20SR3x4	3	3	1 1/2	1.167	48.0
20SR3x6	3	3	1 1/2	1.167	72.0
20SR4x2	4	2	1 1/2	1.250	17.4
20SR4x4	4	2	1 1/2	1.250	34.8
20SR4x6	4	2	1 1/2	1.250	52.2
20SR5x2	5	1 3/4	1 1/4	1.050	12.8
20SR5x4	5	1 3/4	1 1/4	1.050	25.6
20SR5x6	5	1 3/4	1 1/4	1.050	38.4
20SR6x2	6	1 1/2	1 1/2	1.333	13.8
20SR6x4	6	1 1/2	1 1/2	1.333	27.6
20SR6x6	6	1 1/2	1 1/2	1.333	41.4
20SR8x2	8	1 1/4	1 1/4	1.125	9.8
20SR8x4	8	1 1/4	1 1/4	1.125	19.6
20SR8x6	8	1 1/4	1 1/4	1.125	29.4
20SR10x2	10	1	1	0.900	6.0
20SR10x4	10	1	1	0.900	12.0
20SR10x6	10	1	1	0.900	18.0
20SR12x2	12	3/4	3/4	0.667	3.4
20SR12x4	12	3/4	3/4	0.667	6.8
20SR12x6	12	3/4	3/4	0.667	10.2
20SR16x2	16	1/2	1/2	0.438	1.52
20SR16x4	16	1/2	1/2	0.438	3.04
20SR16x6	16	1/2	1/2	0.438	4.56
20SR20x2	20	3/8	3/8	0.325	0.84
20SR20x4	20	3/8	3/8	0.325	1.68
20SR20x6	20	3/8	3/8	0.325	2.52



Machined Gear Racks

Standard Face Width

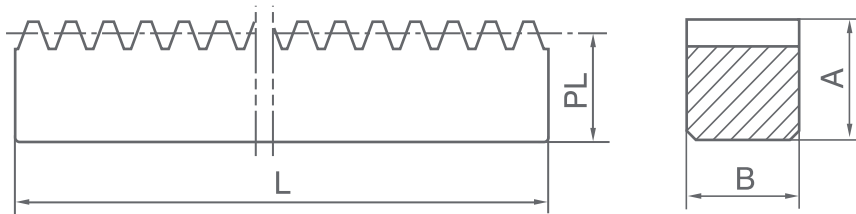
20°
Pressure Angle



Special Note

The racks produced are of the following characteristics of high precision:

- In the whole length of 6ft, unstraight degree is within 0.01", no matter where the measurement is taken at any place of the rack.
- Unverticality of each vertical plane of the rack is less than 0.01".
- Error added up to circumferential pitch of any teeth is less than 0.01".



Catalog Number	DP	B	A	PL	wt Lbs
20WR4x2	4	3 1/2	2	1.750	41.0
20WR4x4		3 1/2	2	1.750	82.0
20WR4x6		3 1/2	2	1.750	123.0
20WR5x2	5	2 1/2	1 1/2	1.300	22.4
20WR5x4		2 1/2	1 1/2	1.300	44.8
20WR5x6		2 1/2	1 1/2	1.300	67.2
20WR6x2	6	2	1 1/2	1.333	17.0
20WR6x4		2	1 1/2	1.333	34.0
20WR6x6		2	1 1/2	1.333	51.0
20WR8x2	8	1 1/2	1 1/2	1.375	13.8
20WR8x4		1 1/2	1 1/2	1.375	27.6
20WR8x6		1 1/2	1 1/2	1.375	41.3
20WR10x2	10	1 1/4	1 1/4	1.150	9.0
20WR10x4		1 1/4	1 1/4	1.150	18.0
20WR10x6		1 1/4	1 1/4	1.150	27.0
20WR12x2	12	1	1	0.917	6.4
20WR12x4		1	1	0.917	12.8
20WR12x6		1	1	0.917	19.2
20WR16x2	16	3/4	3/4	0.688	3.4
20WR16x4		3/4	3/4	0.688	6.8
20WR16x6		3/4	3/4	0.688	10.2
20WR20x2	20	1/2	1/2	0.450	0.8
20WR20x4		1/2	1/2	0.450	1.6
20WR20x6		1/2	1/2	0.450	2.5