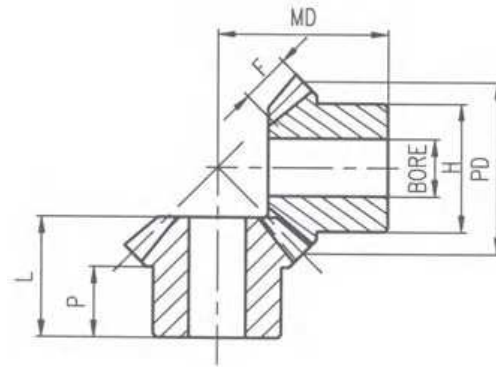




Steel Miter Gears

Pressure angle **20°**



Steel - Plain Bore --- Unhardened Teeth

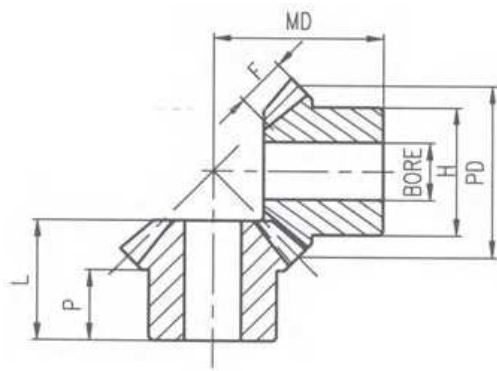
1:1

Pitch	Z	Part.No	PD	OD	MD	Bore		Dimensions				wt
						Stock	Max	F	L	P	H	Lbs
4DP	24	CAI-4DP24	6.00	6.36	5 1/2	1 1/2	2 3/8	1.330	3 9/16	1 15/16	4	14.5
	24	CAI-4DP24A	6.00	6.36	5 1/2	1 3/4	2 3/8	1.330	3 9/16	1 15/16	4	14.0
	28	CAI-4DP28	7.00	7.36	6	2	3	1.430	3 5/8	1 15/16	5	21.5
5DP	25	CAI-5DP25	5.00	5.29	4 5/8	1 3/8	2 1/4	1.100	3	1 3/4	3 1/2	8.8
	25	CAI-5DP25A	5.00	5.29	4 5/8	1 1/2	2 1/4	1.100	3	1 3/4	3 1/2	8.4
	25	CAI-5DP25B	5.00	5.29	4 5/8	1 3/4	2 1/4	1.100	3	1 3/4	3 1/2	7.8
6DP	24	CAI-6DP24	4.00	4.24	3 5/8	1 1/4	2	0.860	2 5/16	1 5/16	3	4.4
	24	CAI-6DP24A	4.00	4.24	3 5/8	1 1/2	2	0.860	2 5/16	1 5/16	3	4.3
	27	CAI-6DP27	4.50	4.74	4 1/8	1 1/4	2 3/16	0.960	2 5/8	1 1/2	3 1/4	6.3
	27	CAI-6DP27A	4.50	4.74	4 1/8	1 1/2	2 3/16	0.960	2 5/8	1 1/2	3 1/4	5.9
8DP	24	CAI-8DP24	3.00	3.18	2 9/16	3/4	1	0.640	1 37/64	1 13/16	1 3/4	1.5
	24	CAI-8DP24A	3.00	3.18	2 3/4	1	1 3/8	0.640	1 49/64	1	2 1/2	2.1
	24	CAI-8DP24B	3.00	3.18	2 3/4	1 1/4	1 5/8	0.640	1 49/64	1	2 1/2	1.9
	28	CAI-8DP28	3.50	3.68	3 1/4	1	1 5/8	0.750	2 3/32	1 1/4	2 1/2	2.9
	28	CAI-8DP28A	3.50	3.68	3 1/4	1 3/16	1 5/8	0.750	2 3/32	1 1/4	2 1/2	2.8
	28	CAI-8DP28B	3.50	3.68	3 1/4	1 1/4	1 5/8	0.750	2 3/32	1 1/4	2 1/2	2.6
	32	CAI-8DP32	4.00	4.18	3 5/8	1	2	0.840	2 9/32	1 1/8	3	4.8
10DP	20	CAI-10DP20A	2.00	2.14	2	1/2	7/8	0.440	1 23/64	1 13/16	1 5/8	0.75
	20	CAI-10DP20B	2.00	2.14	2	5/8	7/8	0.440	1 23/64	1 13/16	1 5/8	0.72
	20	CAI-10DP20	2.00	2.14	2	3/4	7/8	0.440	1 23/64	1 13/16	1 5/8	0.67
	20	CAI-10DP20C	2.00	2.14	2	7/8	7/8	0.440	1 23/64	1 13/16	1 5/8	0.58
	25	CAI-10DP25	2.50	2.64	2 7/16	3/4	1 1/4	0.550	1 5/8	1 5/16	2	1.2
	25	CAI-10DP25A	2.50	2.64	2 7/16	7/8	1 1/4	0.550	1 5/8	1 5/16	2	1.2
	25	CAI-10DP25B	2.50	2.64	2 7/16	1	1 1/4	0.550	1 5/8	1 5/16	2	1.2
	30	CAI-10DP30	3.00	3.14	2 3/4	3/4	1 5/8	0.640	1 3/4	1	2	1.8
12DP	15	CAI-12DP15	1.25	1.37	1 1/4	3/8	3/4	0.270	5 5/64	1/2	1	0.17
	15	CAI-12DP15A	1.25	1.37	1 1/4	7/16	3/4	0.270	5 5/64	1/2	1	0.16
	15	CAI-12DP15B	1.25	1.37	1 1/4	1/2	3/4	0.270	5 5/64	1/2	1	0.15
	18	CAI-12DP18	1.50	1.62	1 1/2	1/2	7/8	0.320	1 1/64	5/8	1 1/4	0.30
	18	CAI-12DP18A	1.50	1.62	1 1/2	5/8	7/8	0.320	1 1/64	5/8	1 1/4	0.25
	18	CAI-12DP18B	1.50	1.62	1 1/2	3/4	7/8	0.320	1 1/64	5/8	1 1/4	0.22
	21	CAI-12DP21	1.75	1.87	1 3/4	1/2	1	0.390	1 3/16	1 1/16	1 3/8	0.45
	21	CAI-12DP21A	1.75	1.87	1 3/4	9/16	1	0.390	1 3/16	1 1/16	1 3/8	0.45
	21	CAI-12DP21B	1.75	1.87	1 3/4	5/8	1	0.390	1 3/16	1 1/16	1 3/8	0.43
	21	CAI-12DP21C	1.75	1.87	1 3/4	3/4	1	0.390	1 3/16	1 1/16	1 3/8	0.38
	24	CAI-12DP24	2.00	2.12	1 7/8	1/2	1	0.430	1 7/32	1 1/16	1 1/2	0.62
30	CAI-12DP30	2.50	2.62	2 5/16	5/8	1 1/4	0.540	1 31/64	2 7/32	1 3/4	1.10	
14DP	14	CAI-14DP14	1.00	1.11	1 1/16	3/8	5/8	0.190	4 7/64	1/2	7/8	0.10
	14	CAI-14DP14A	1.00	1.11	1 1/16	7/16	5/8	0.190	4 7/64	1/2	7/8	0.10
16DP	12	CAI-16DP12	0.75	0.84	1 3/16	5/16	7/16	0.160	3 7/64	3/8	5/8	0.10
	16	CAI-16DP16	1.00	1.09	1 1/16	3/8	1/2	0.220	3/4	7/16	3/4	0.10
	20	CAI-16DP20	1.25	1.34	1 1/4	7/16	5/8	0.270	2 7/32	1/2	1	0.20
	24	CAI-16DP24	1.50	1.59	1 3/8	1/2	7/8	0.310	7/8	1/2	1	0.20
20DP	20	CAI-20DP20	1.00	1.07	1 1/8	3/8	5/8	0.230	1 3/16	1/2	3/4	0.10
	25	CAI-20DP25	1.25	1.32	1 3/16	3/8	3/4	0.250	3/4	7/16	1	0.10
24DP	24	CAI-24DP24	1.00	1.06	2 9/32	1/4	1/2	0.200	9/16	9/32	5/8	0.10



Steel Miter Gears

Pressure angle **20°**



Steel - Plain Bore --- Hardened Teeth

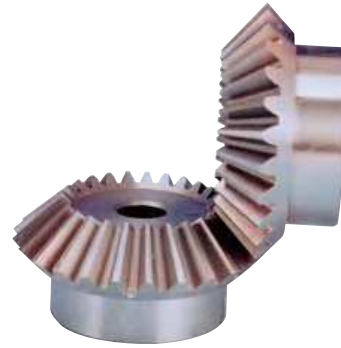
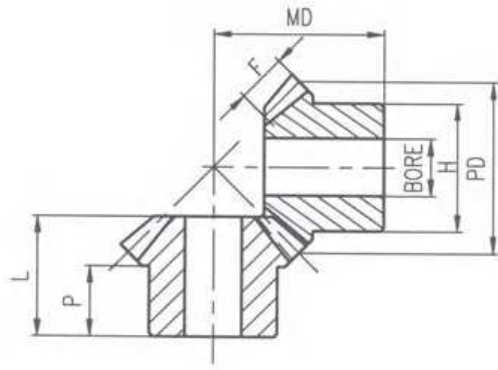
1:1

Pitch	Z	Part.No	PD	OD	MD	Bore		Dimensions				wt
						Stock	Max	F	L	P	H	Lbs
4DP	24	CAI-H4DP24	6.00	6.36	5 1/2	1 1/2	2 3/8	1.330	3 9/16	1 15/16	4	14.5
	24	CAI-H4DP24A	6.00	6.36	5 1/2	1 3/4	2 3/8	1.330	3 9/16	1 15/16	4	14.0
	28	CAI-H4DP28	7.00	7.36	6	2	3	1.430	3 5/8	1 15/16	5	21.5
5DP	25	CAI-H5DP25	5.00	5.29	4 5/8	1 3/8	2 1/4	1.100	3	1 3/4	3 1/2	8.8
	25	CAI-H5DP25A	5.00	5.29	4 5/8	1 1/2	2 1/4	1.100	3	1 3/4	3 1/2	8.4
	25	CAI-H5DP25B	5.00	5.29	4 5/8	1 3/4	2 1/4	1.100	3	1 3/4	3 1/2	7.8
6DP	24	CAI-H6DP24	4.00	4.24	3 5/8	1 1/4	2	0.860	2 5/16	1 5/16	3	4.4
	24	CAI-H6DP24A	4.00	4.24	3 5/8	1 1/2	2	0.860	2 5/16	1 5/16	3	4.3
	27	CAI-H6DP27	4.50	4.74	4 1/8	1 1/4	2 3/16	0.960	2 5/8	1 1/2	3 1/4	6.3
	27	CAI-H6DP27A	4.50	4.74	4 1/8	1 1/2	3/16	0.960	2 5/8	1 1/2	3 1/4	5.9
8DP	24	CAI-H8DP24	3.00	3.18	2 9/16	3/4	1	0.640	1 37/64	13/16	1 3/4	1.5
	24	CAI-H8DP24A	3.00	3.18	2 3/4	1	1 3/8	0.640	1 49/64	1	2 1/2	2.1
	24	CAI-H8DP24B	3.00	3.18	2 3/4	1 1/4	1 5/8	0.640	1 49/64	1	2 1/2	1.9
	28	CAI-H8DP28	3.50	3.68	3 1/4	1	1 5/8	0.750	2 3/32	1 1/4	2 1/2	2.9
	28	CAI-H8DP28A	3.50	3.68	3 1/4	1 3/16	1 5/8	0.750	2 3/32	1 1/4	2 1/2	2.8
	28	CAI-H8DP28B	3.50	3.68	3 1/4	1 1/4	1 5/8	0.750	2 3/32	1 1/4	2 1/2	2.6
	32	CAI-H8DP32	4.00	4.18	3 5/8	1	2	0.840	2 9/32	1 1/8	3	4.8
10DP	20	CAI-H10DP20A	2.00	2.14	2	1/2	7/8	0.440	1 23/64	13/16	1 5/8	0.75
	20	CAI-H10DP20B	2.00	2.14	2	5/8	7/8	0.440	1 23/64	13/16	1 5/8	0.72
	20	CAI-H10DP20	2.00	2.14	2	3/4	7/8	0.440	1 23/64	13/16	1 5/8	0.67
	20	CAI-H10DP20C	2.00	2.14	2	7/8	7/8	0.440	1 23/64	13/16	1 5/8	0.58
	25	CAI-H10DP25	2.50	2.64	2 7/16	3/4	1 1/4	0.550	1 5/8	1 5/16	2	1.2
	25	CAI-H10DP25A	2.50	2.64	2 7/16	7/8	1 1/4	0.550	1 5/8	1 5/16	2	1.2
	25	CAI-H10DP25B	2.50	2.64	2 7/16	1	1 1/4	0.550	1 5/8	1 5/16	2	1.2
	30	CAI-H10DP30	3.00	3.14	2 3/4	3/4	1 5/8	0.640	1 3/4	1	2	1.8
12DP	15	CAI-H12DP15	1.25	1.37	1 1/4	3/8	3/4	0.270	55/64	1/2	1	0.17
	15	CAI-H12DP15A	1.25	1.37	1 1/4	7/16	3/4	0.270	55/64	1/2	1	0.16
	15	CAI-H12DP15B	1.25	1.37	1 1/4	1/2	3/4	0.270	55/64	1/2	1	0.15
	18	CAI-H12DP18	1.50	1.62	1 1/2	1/2	7/8	0.320	1 1/64	5/8	1 1/4	0.30
	18	CAI-H12DP18A	1.50	1.62	1 1/2	5/8	7/8	0.320	1 1/64	5/8	1 1/4	0.25
	18	CAI-H12DP18B	1.50	1.62	1 1/2	3/4	7/8	0.320	1 1/64	5/8	1 1/4	0.22
	21	CAI-H12DP21	1.75	1.87	1 3/4	1/2	1	0.390	1 3/16	1 1/16	1 3/8	0.45
	21	CAI-H12DP21A	1.75	1.87	1 3/4	5/8	1	0.390	1 3/16	1 1/16	1 3/8	0.45
	24	CAI-H12DP24	2.00	2.12	1 7/8	1/2	1	0.430	1 7/32	1 1/16	1 1/2	0.62
	30	CAI-H12DP30	2.50	2.62	2 5/16	5/8	1 1/4	0.540	1 31/64	2 7/32	1 1/2	1.10
14DP	14	CAI-H14DP14	1.00	1.11	1 1/16	3/8	5/8	0.190	47/64	1/2	7/8	0.10
	14	CAI-H14DP14A	1.00	1.1	1 1/16	7/16	5/8	0.190	47/64	1/2	7/8	0.10
16DP	16	CAI-H16DP16	1.00	1.09	1 1/16	3/8	1/2	0.220	3/4	7/16	3/4	0.10
	24	CAI-H16DP24	1.50	1.59	1 3/8	1/2	7/8	0.310	7/8	1/2	1	0.20
24DP	24	CAI-H24DP24	1.00	1.06	2 9/32	1/4	1/2	0.200	9/16	9/32	5/8	0.10



Steel Miter Gears

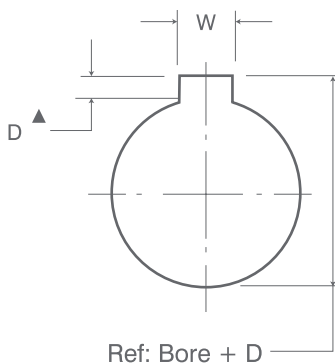
Pressure angle **20°**



Steel - Furnished With Keyway and Set Screw

1:1

Pitch	Z	Part.No	PD	OD	MD	Bore		Dimensions				wt
						Stock	Max	F	L	P	H	Lbs
4DP	24	CAI-FB4DP24A	6.00	6.36	5 1/2	1 3/4	2 3/8	1.330	3 9/16	1 15/16	4	14.0
	28	CAI-FB4DP28	7.00	7.36	6	2	3	1.430	3 5/8	1 15/16	5	21.5
5DP	25	CAI-FB5DP25	5.00	5.29	4 5/8	1 3/8	2 1/4	1.100	3	1 3/4	3 1/2	8.8
	25	CAI-FB5DP25B	5.00	5.29	4 5/8	1 3/4	2 1/4	1.100	3	1 3/4	3 1/2	8.4
6DP	24	CAI-FB6DP24	4.00	4.24	3 5/8	1 1/4	2	0.860	2 5/16	1 5/16	3	4.4
	24	CAI-FB6DP24A	4.00	4.24	3 5/8	1 1/2	2	0.860	2 5/16	1 5/16	3	4.3
	27	CAI-FB6DP27	4.50	4.74	4 1/8	1 1/4	2 3/16	0.960	2 5/8	1 1/2	3 1/4	6.3
	27	CAI-FB6DP27A	4.50	4.74	4 1/8	1 1/2	2 3/16	0.960	2 5/8	1 1/2	3 1/4	5.9
8DP	24	CAI-FB8DP24	3.00	3.18	2 9/16	3/4	1	0.640	1 37/64	13/16	1 3/4	1.5
	24	CAI-FB8DP24A	3.00	3.18	2 3/4	1	1 3/8	0.640	1 49/64	1 1/16	2 1/2	2.1
	24	CAI-FB8DP24B	3.00	3.18	2 3/4	1 1/4	1 5/8	0.640	1 49/64	1 1/16	2 1/2	1.9
	28	CAI-FB8DP28	3.50	3.68	3 1/4	1	1 5/8	0.75	2 3/32	1 1/4	2 1/2	2.9
	28	CAI-FB8DP28A	3.50	3.68	3 1/4	1 3/16	1 5/8	0.750	2 3/32	1 1/4	2 1/2	2.8
	28	CAI-FB8DP28B	3.50	3.68	3 1/4	1 1/4	1 5/8	0.750	2 3/32	1 1/4	2 1/2	2.6
10DP	20	CAI-FB10DP20A	2.00	2.14	2	1/2	7/8	0.440	1 23/64	13/16	1 5/8	0.75
	20	CAI-FB10DP20B	2.00	2.14	2	5/8	7/8	0.440	1 23/64	13/16	1 5/8	0.72
	20	CAI-FB10DP20	2.00	2.14	2	3/4	7/8	0.440	1 23/64	13/16	1 5/8	0.67
	20	CAI-FB10DP20C	2.00	2.14	2	7/8	7/8	0.440	1 23/64	13/16	1 5/8	0.58
	25	CAI-FB10DP25	2.50	2.64	2 7/16	3/4	1 1/4	0.550	1 5/8	1 5/16	2	1.2
	25	CAI-FB10DP25A	2.50	2.64	2 7/16	7/8	1 1/4	0.550	1 5/8	1 5/16	2	1.2
12DP	25	CAI-FB10DP25B	2.50	2.64	2 7/16	1	1 1/4	0.550	1 5/8	1 5/16	2	1.2
	15	CAI-FB12DP15B	1.25	1.37	1 1/4	1/2	3/4	0.270	55/64	1/2	1	0.15
	18	CAI-FB12DP18A	1.50	1.62	1 1/2	5/8	7/8	0.320	1 1/64	5/8	1 1/4	0.25
	21	CAI-FB12DP21B	1.75	1.87	1 3/4	3/4	1	0.390	1 3/16	1 1/16	1 3/8	0.62
16DP	30	CAI-FB12DP30	2.50	2.62	2 5/16	5/8	1 1/4	0.540	1 31/64	27/32	1 3/4	1.10
	16	CAI-FB16DP16	1.00	1.09	1 1/16	3/8	1/2	0.220	3/4	7/16	3/4	0.10
	24	CAI-FB12DP24	1.50	1.59	1 3/8	1/2	7/8	0.310	7/8	1/2	1	0.20



ISO STANDARD METHOD FOR MEASURING KEYSEAT DEPTH

▲ Depth measured at centerline.

Reference:
1 inch = 25.4 millimeters
1 millimeter = .03937 inches.

Standard Keyseats

Bore Range	Keyseat
3/8"	3/32"X3/64"
1/2	1/8"X1/16"
5/8 to 7/8	3/16X3/32
15/16 to 1 1/4	1/4X1/8
1 7/16 to 1 3/4	3/8X3/16