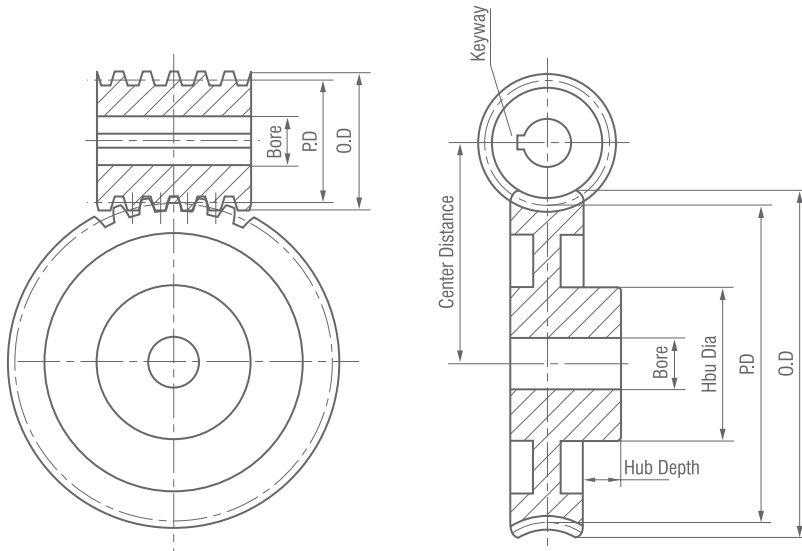




# ***Worm and Worm Gears***

**141/2°** Pressure Angle

**3DP**



**CSP**

**Right Hand Single Thread -- Stocked Right Hand Only**

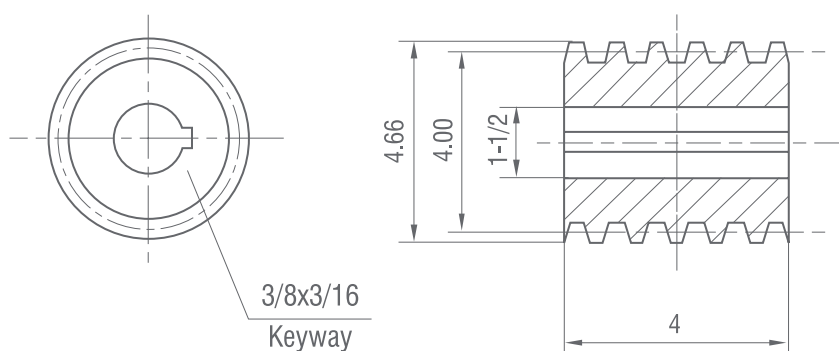
**3DP 2" Face**

**Cast Iron and Bronze**

PART NUMBER	Z	PD	Bore	Hub Dia	Hub Depth	wt Lbs	Style
WG318	18	6.00	1	3	1 1/2	16.2	CWE.CSP
WG324	24	8.00	1 1/2	3 1/2	1 1/2	22.8	CSP
WG330	30	10.00	1 1/2	3 1/2	1 1/2	30.2	CSP
WG336	36	12.00	1 1/2	3 1/2	1 1/2	36.4	CSP
WG354	54	18.00	1 1/2	4	1 1/2	60.2	CSP

**1 Single Steel -- 4° 46' Helix Angle Worms**

**W3-S**



**CWE**



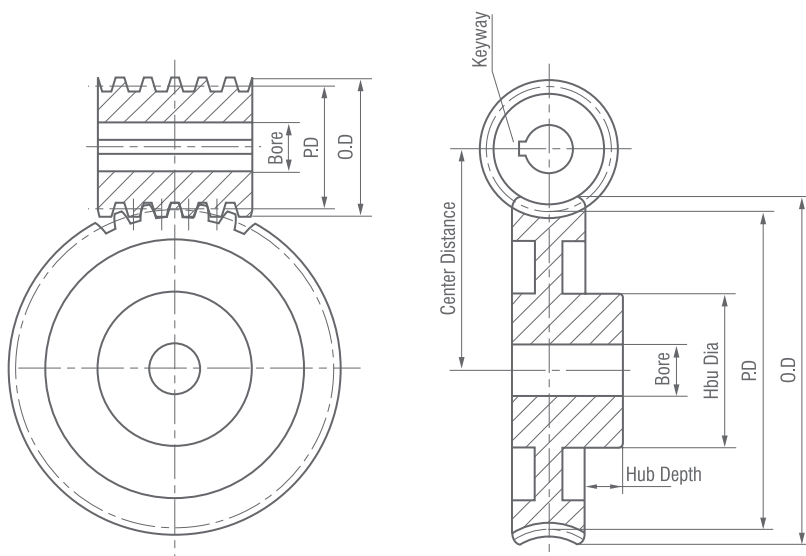
**CPL**



## ***Worm and Worm Gears***

**14 1/2°** Pressure Angle

**4DP**



**Right Hand Single Thread -- Stocked Right Hand Only**

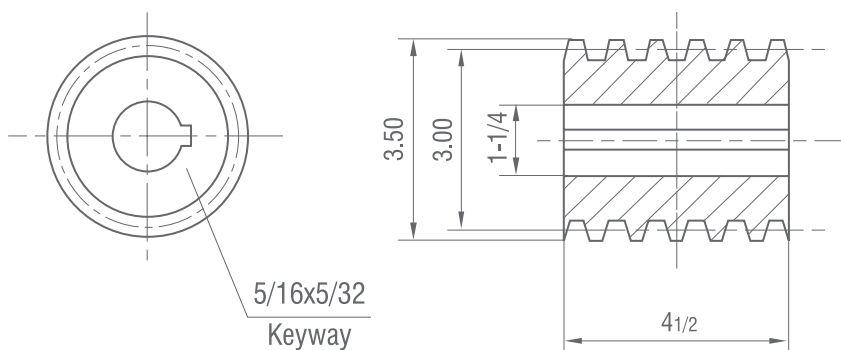
**4DP 1 1/2" Face**

**Cast Iron and Bronze**

PART NUMBER	Z	PD	Bore	Hub Dia	Hub Depth	wt Lbs	Style
WG420	20	5.00	1	2 1/2	1 1/4	8.4	CWE,CSP
WG424	24	6.00	1	2 1/2	1 1/4	12.9	CWE,CSP
WG432	32	8.00	1 1/4	3	1 1/4	15.6	CWE,CSP
WG440	40	10.00	1 1/4	3	1 1/4	27.5	CWE,CSP
WG448	48	12.00	1 1/2	4	1 1/4	34.1	CWE,CSP
WG464	64	16.00	1 1/2	4	1 1/4	43.9	CSP

**1 Single Steel -- 4° 46' Helix Angle Worms**

**W4-S**



CWE



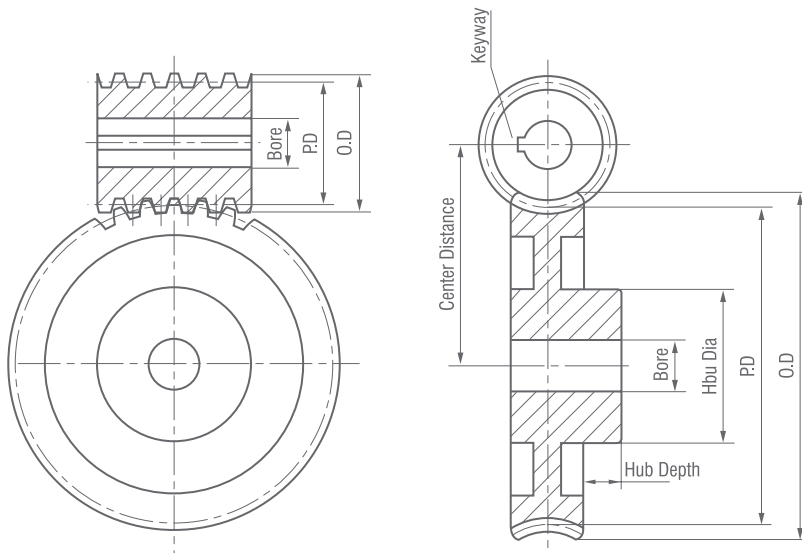
CPL



## ***Worm and Worm Gears***

**14 1/2°** Pressure Angle

**6DP**



**CSP**

**Right Hand Single Thread -- Stocked Right Hand Only**

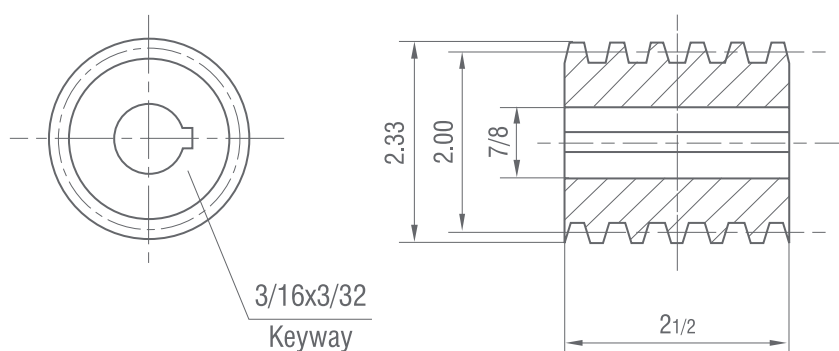
**6DP 1" Face**

**Cast Iron and Bronze**

PART NUMBER	Z	PD	Bore	Hub Dia	Hub Depth	wt Lbs	Style
WG620	20	3.333	3/4	1 7/8	7/8	2.5	CWE,CSP
WG624	24	4.000	3/4	1 7/8	7/8	3.6	CWE,CSP
WG630	30	5.000	7/8	2 1/4	7/8	5.0	CWE,CSP
WG636	36	6.000	1	2 1/2	7/8	6.0	CWE,CSP
WG640	40	6.667	1	2 1/2	7/8	7.6	CWE,CSP
WG648	48	8.000	1 1/4	2 3/4	1	9.2	CWE,CSP
WG660	60	10.000	1 1/4	3	1 1/4	13.7	CWE,CSP
WG672	72	12.000	1 1/4	3	1 1/4	14.9	CWE,CSP

**1 Single Steel -- 4° 46' Helix Angle Worms**

**W6-S**



**CWE**



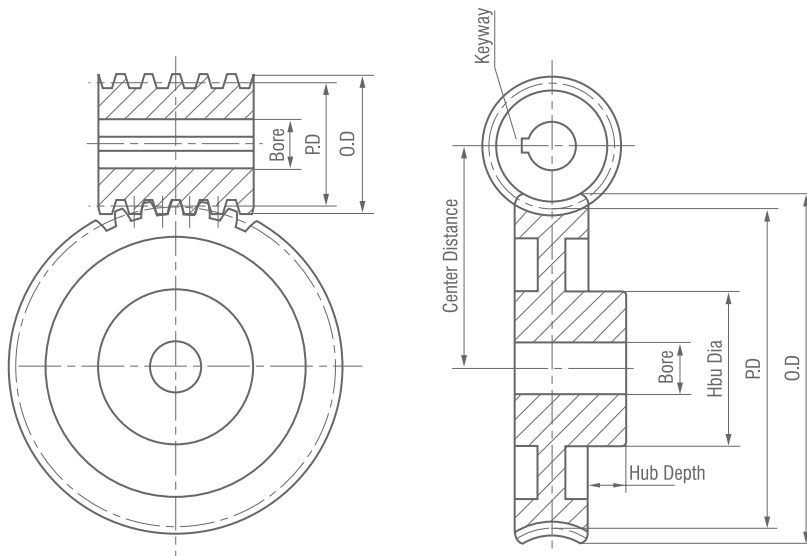
**CPL**



## ***Worm and Worm Gears***

**14 1/2°** Pressure Angle

**6DP**



**CSP**

**Right Hand Double Thread -- Stocked Right Hand Only**

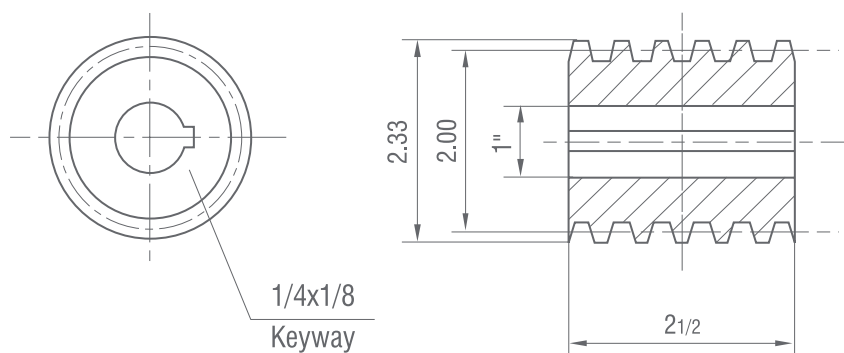
**6DP 1" Face**

**Cast Iron and Bronze**

PART NUMBER	Z	PD	Bore	Hub Dia	Hub Depth	wt Lbs	Style
WG620D	20	3.333	1	2 3/4	1	3.3	CPL
WG624D	24	4.000	1 1/4	2 3/4	1	4.1	CPL
WG630D	30	5.000	1 1/4	2 3/4	1	5.2	CWE,CSP
WG640D	40	6.667	1 1/4	2 3/4	1	7.6	CWE,CSP

**2 Double Steel -- 9° 28' Helix Angle Worms**

**W6-D**



**CWE**



**CPL**

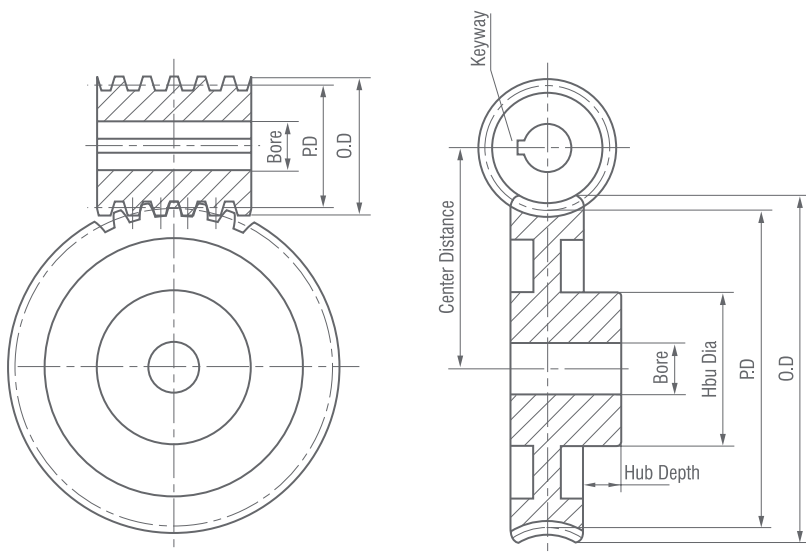


## ***Worm and Worm Gears***

**14 1/2°**

*Pressure Angle*

**6DP**



**CSP**

**Right Hand Quadruple Thread -- Stocked Right Hand Only**

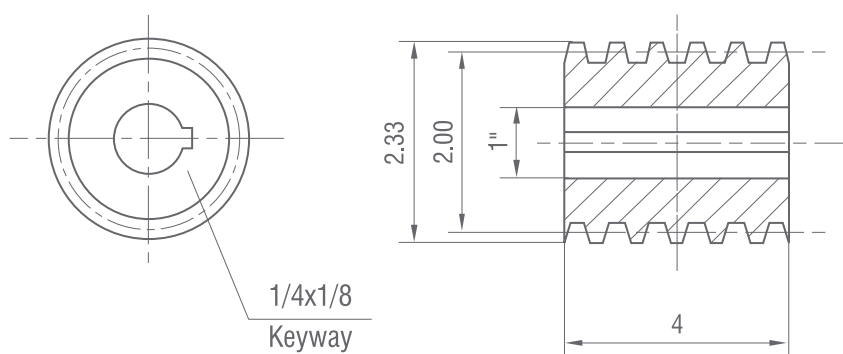
**6DP 1" Face**

**Cast Iron and Bronze**

PART NUMBER	Z	PD	Bore	Hub Dia	Hub Depth	wt Lbs	Style
WG620Q	20	3.333	1	2 3/4	1	3.4	CPL
WG624Q	24	4.000	1 1/4	2 3/4	1	4.1	CPL

**4 Quadruple Steel -- 18° 26' Helix Angle Worms**

**W6-Q**



**CWE**



**CPL**



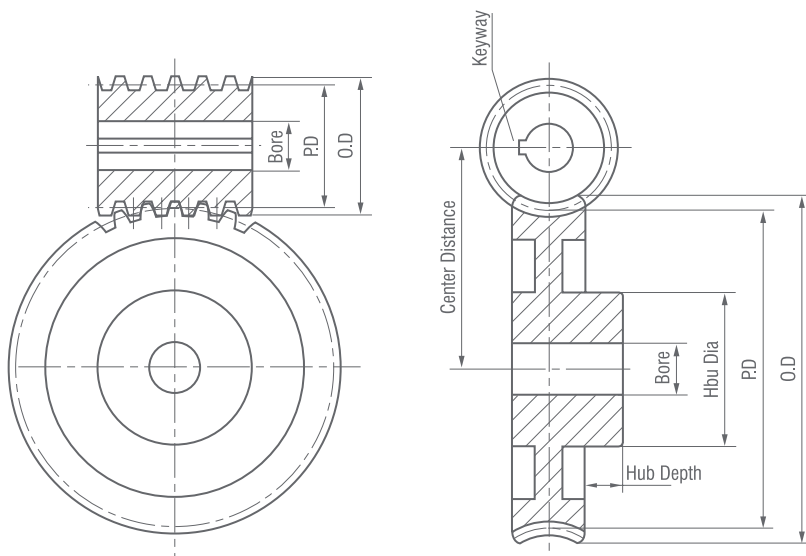


## ***Worm and Worm Gears***

**14 1/2°**

*Pressure Angle*

**8DP**



**CSP**

**Right Hand Single Thread -- Stocked Right Hand Only**

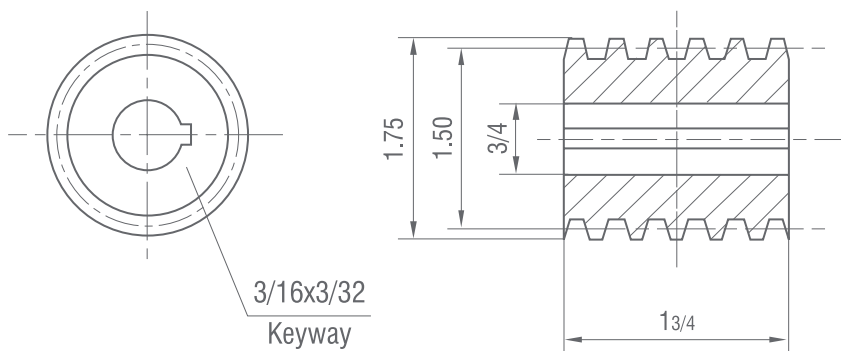
**8DP 3/4" Face**

**Cast Iron and Bronze**

PART NUMBER	Z	PD	Bore	Hub Dia	Hub Depth	wt Lbs	Style
WG820	20	2.500	3/4	1 3/4	3/4	1.3	CPL
WG830	30	3.750	3/4	1 3/4	3/4	2.4	CPL
WG840	40	5.000	1	2 3/8	7/8	3.7	CWE.CSP
WG848	48	6.000	1	2 3/8	7/8	4.5	CWE.CSP
WG850	50	6.250	1	2 3/8	7/8	5.1	CWE.CSP
WG860	60	7.500	1	2 1/2	7/8	6.1	CWE.CSP
WG880	80	10.000	1 1/4	3	7/8	8.9	CWE.CSP

**1 Single Steel -- 4° 46' Helix Angle Worms**

**W8-S**



**CWE**



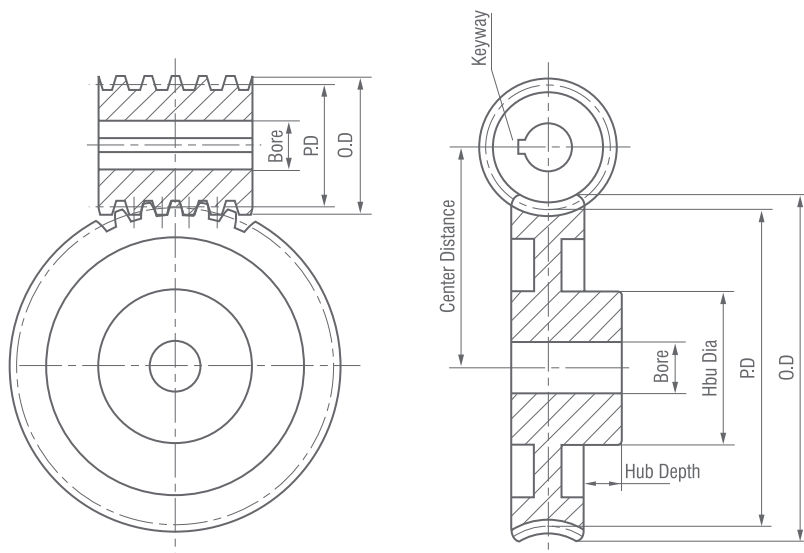
**CPL**



## ***Worm and Worm Gears***

**14 1/2°** Pressure Angle

**8DP**



CSP

**Right Hand Double Thread -- Stocked Right Hand Only**

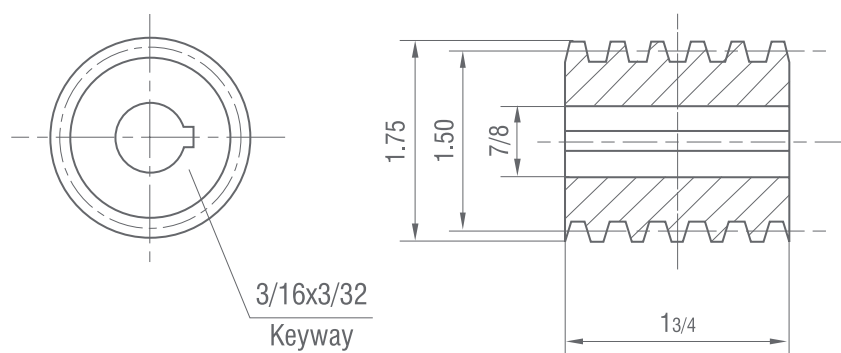
**8DP 3/4" Face**

**Cast Iron and Bronze**

PART NUMBER	Z	PD	Bore	Hub Dia	Hub Depth	wt Lbs	Style
WG820D	20	2.500	1	2	3/4	1.2	CPL
WG830D	30	3.750	1	2 1/4	3/4	2.5	CPL,CSP
WG840D	40	5.000	1	2 1/4	3/4	3.4	CWE,CSP

**2 Double Steel -- 9° 28' Helix Angle Worms**

**W8-D**



CWE



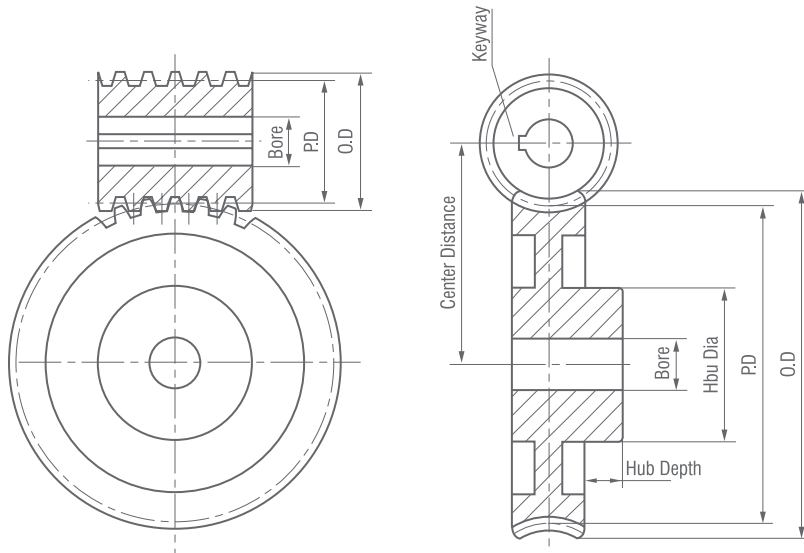
CPL



## ***Worm and Worm Gears***

**14 1/2°** Pressure Angle

**8DP**



CSP

**Right Hand Quadruple Thread -- Stocked Right Hand Only**

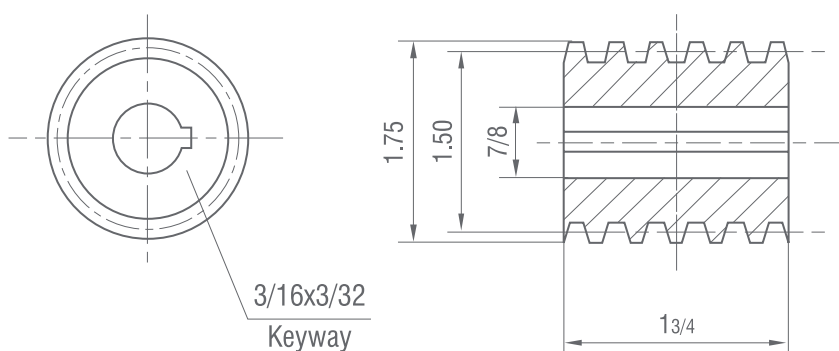
**8DP 3/4" Face**

**Cast Iron and Bronze**

PART NUMBER	Z	PD	Bore	Hub Dia	Hub Depth	wt Lbs	Style
WG820Q	20	2.500	1	2	3/4	1.2	CPL
WG830Q	30	3.750	1	2 1/4	3/4	2.5	CPL,CSP

## **4 Quadruple Steel -- 18 26' Helix Angle Worms**

**W8-Q**



CWE



CPL

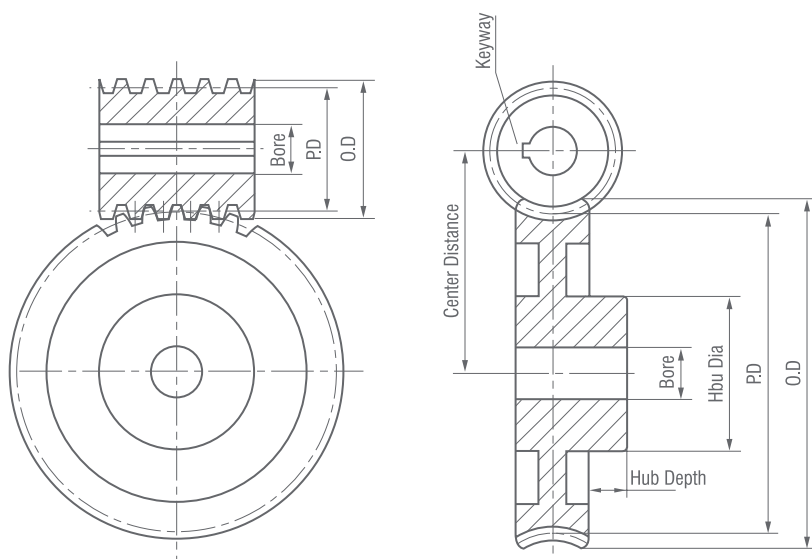




## ***Worm and Worm Gears***

**14 1/2°** Pressure Angle

**10DP**



CSP

**Right Hand Single Thread -- Stocked Right Hand Only**

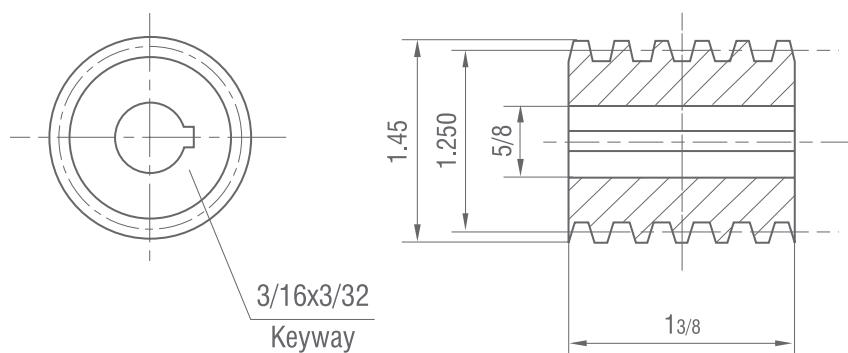
**10DP 5/8" Face**

**Cast Iron and Bronze**

PART NUMBER	Z	PD	Bore	Hub Dia	Hub Depth	wt Lbs	Style
WG1020	20	2.00	1/2	1 1/4	3/4	0.7	CPL
WG1030	30	3.00	5/8	1 3/4	3/4	1.5	CPL
WG1040	40	4.00	5/8	1 3/4	3/4	1.8	CWE,CSP
WG1050	50	5.00	3/4	2	3/4	2.8	CWE,CSP
WG1060	60	6.00	3/4	2	3/4	3.6	CWE,CSP
WG1080	80	8.00	3/4	2	3/4	4.8	CWE,CSP
WG1080	100	10.00	3/4	2	3/4	6.0	CWE,CSP

**1 Single Steel -- 4° 34' Helix Angle Worms**

**W10-S**



CWE



CPL

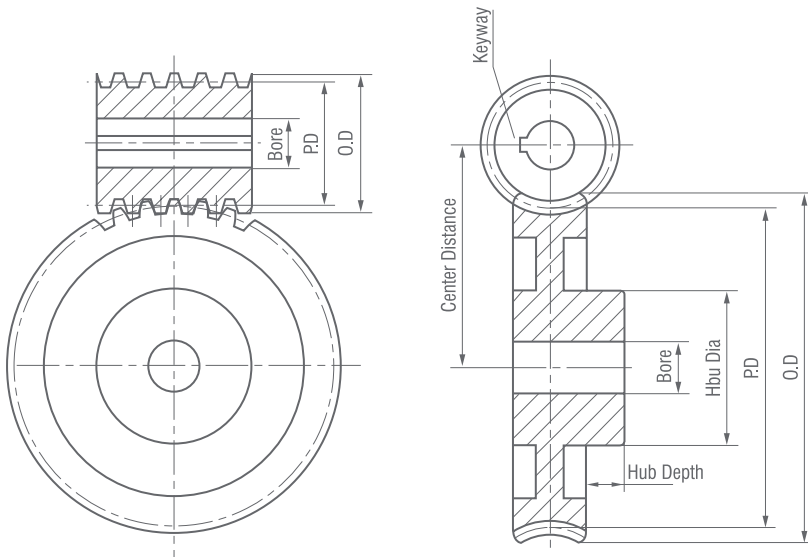


## ***Worm and Worm Gears***

**14 1/2°**

*Pressure Angle*

**10DP**



**CSP**

**Right Hand Double Thread -- Stocked Right Hand Only**

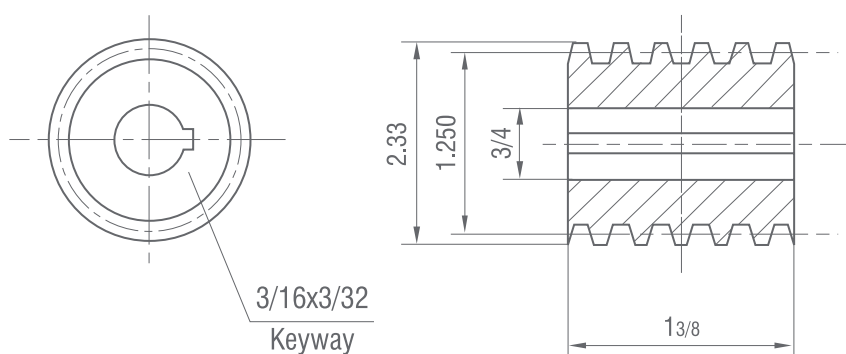
**10DP 5/8" Face**

**Cast Iron and Bronze**

PART NUMBER	Z	PD	Bore	Hub Dia	Hub Depth	wt Lbs	Style
WG1020D	20	2.00	7/8	1 5/8	5/8	0.65	CPL
WG1030D	30	3.00	7/8	1 3/4	5/8	1.3	CPL,CS
WG1040D	40	4.00	7/8	1 3/4	5/8	1.6	CWE,CS
WG1050D	50	5.00	7/8	2	1	2.9	CWE,CS
WG1060D	60	6.00	7/8	2	1	3.0	CWE,CS

**2 Double Steel -- 9° 5' Helix Angle Worms**

**W10-D**



**CWE**



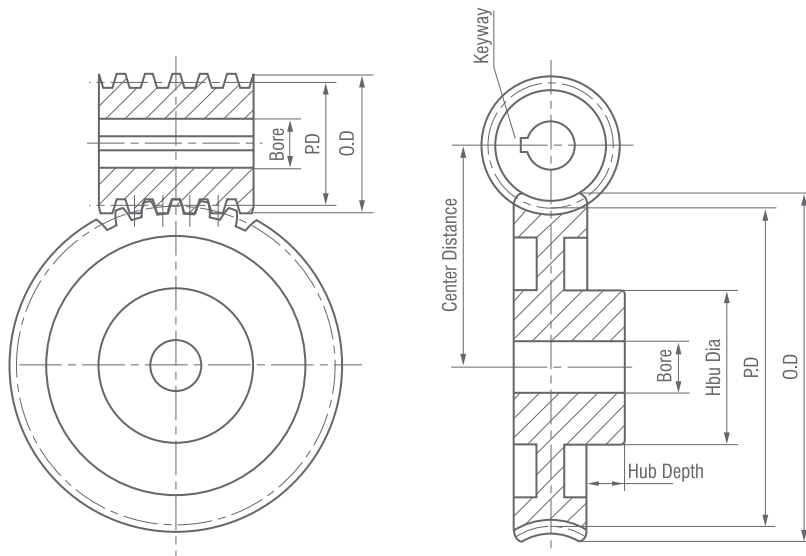
**CPL**



# ***Worm and Worm Gears***

**14 1/2°** Pressure Angle

**10DP**



**CSP**

**Right Hand Quadruple Thread -- Stocked Right Hand Only**

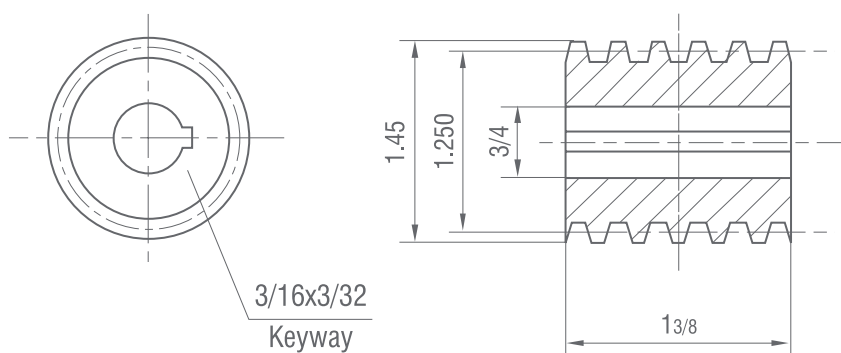
**10DP 5/8" Face**

**Cast Iron and Bronze**

PART NUMBER	Z	PD	Bore	Hub Dia	Hub Depth	wt Lbs	Style
WG1020Q	20	2.00	7/8	1 5/8	5/8	0.64	CPL
WG1030Q	30	3.00	7/8	1 3/4	5/8	1.3	CPL,CSP
WG1040	40	4.00	7/8	1 3/4	5/8	1.6	CWE,CSP

**4 Single Steel -- 17° 45' Helix Angle Worms**

**W10-Q**



**CWE**



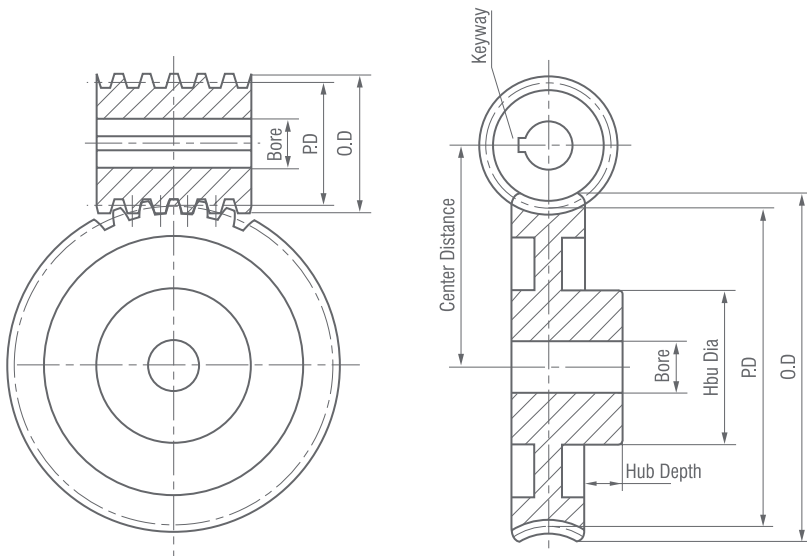
**CPL**



## ***Worm and Worm Gears***

**14 1/2°** Pressure Angle

**12DP**



CSP

**Right Hand Single Thread -- Stocked Right Hand Only**

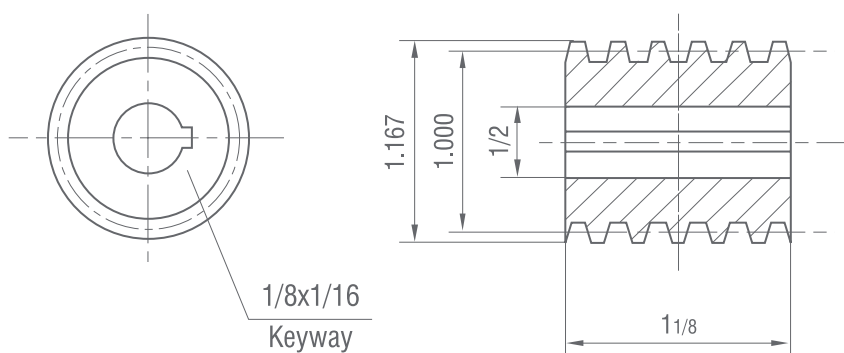
**12DP 1/2" Face**

**Cast Iron and Bronze**

PART NUMBER	Z	PD	Bore	Hub Dia	Hub Depth	wt Lbs	Style
WG1220	20	1.660	1/2	1 1/4	5/8	0.35	CPL
WG1230	30	2.500	1/2	1 1/4	5/8	0.71	CPL,CSP
WG1240	40	3.333	5/8	1 1/2	3/4	1.2	CPL,CSP
WG1250	50	4.166	5/8	1 1/2	3/4	1.5	CWE,CSP
WG1260	60	5.000	5/8	1 3/4	3/4	2.0	CWE,CSP
WG1280	80	6.666	5/8	2 1/2	3/4	3.9	CWE,CSP
WG12100	100	8.333	3/4	2	3/4	4.4	CWE,CSP

**1 Double Steel -- 4° 46' Helix Angle Worms**

**W12-S**



CWE



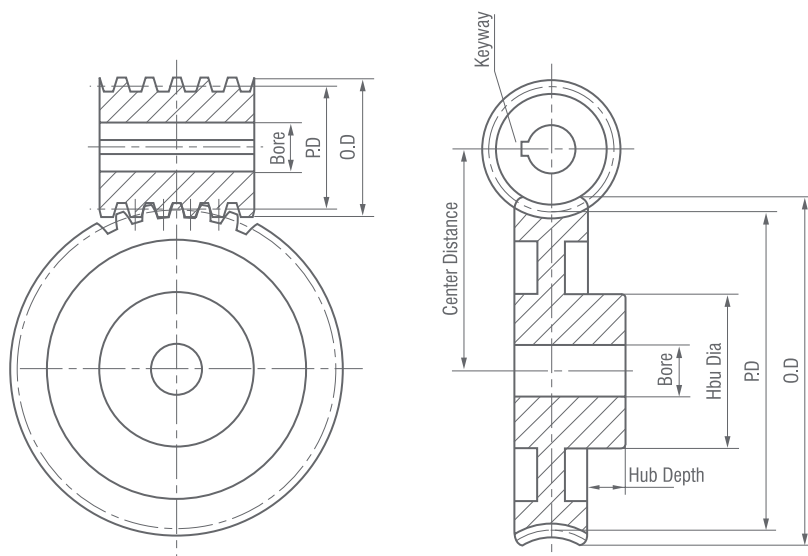
CPL



## ***Worm and Worm Gears***

**14 1/2°** Pressure Angle

**12DP**



CSP

**Right Hand Double Thread -- Stocked Right Hand Only**

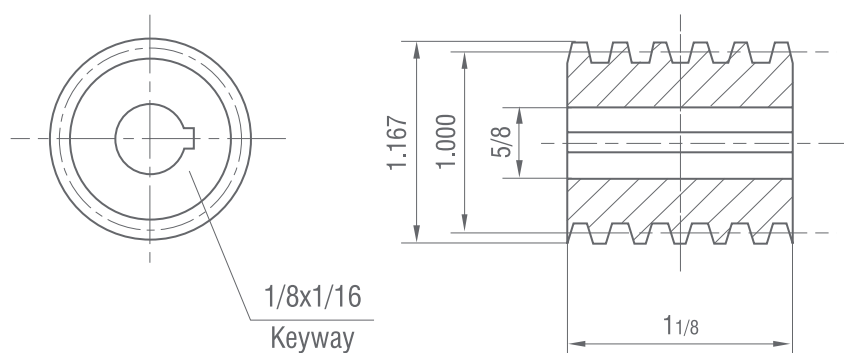
**12DP 1/2" Face**

**Cast Iron and Bronze**

PART NUMBER	Z	PD	Bore	Hub Dia	Hub Depth	wt Lbs	Style
WG1220D	20	1.666	1/2	1 1/4	1/2	0.32	CPL
WG1230D	30	2.500	3/4	1 1/2	5/8	0.78	CPL
WG1240D	40	3.333	3/4	1 3/4	5/8	1.3	CPL,CSP

**2 Double Steel -- 9° 28' Helix Angle Worms**

**W12-D**



CWE



CPL

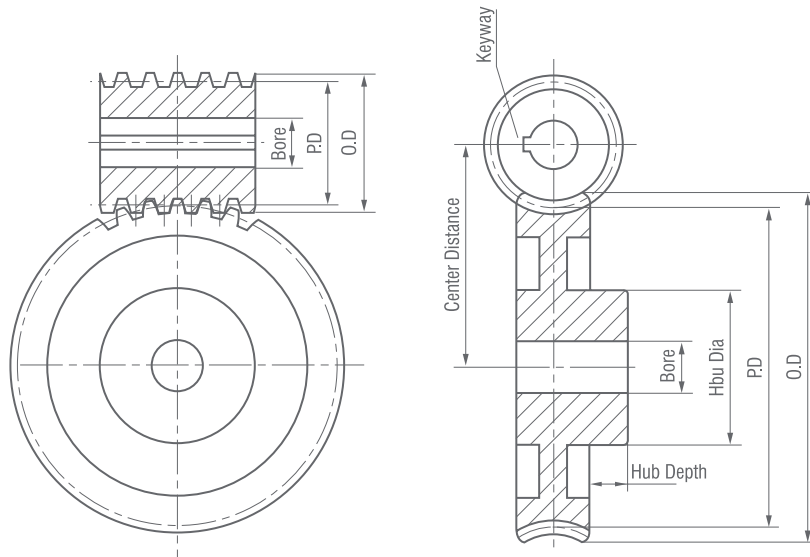




## ***Worm and Worm Gears***

**14 1/2°** Pressure Angle

**12DP**



CSP

**Right Hand Quadruple Thread -- Stocked Right Hand Only**

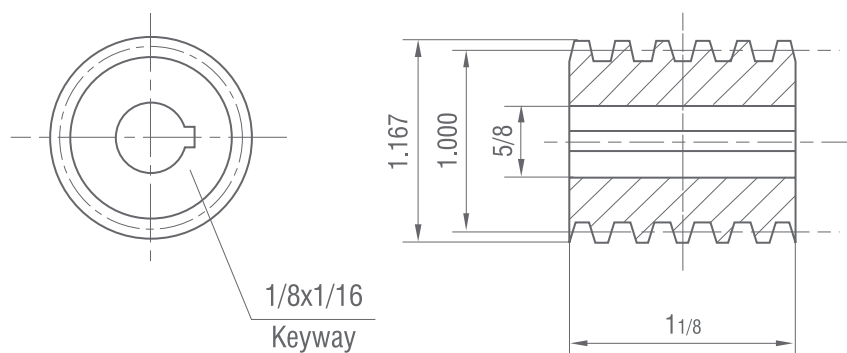
**12DP 1/2" Face**

**Cast Iron and Bronze**

PART NUMBER	Z	PD	Bore	Hub Dia	Hub Depth	wt Lbs	Styl
WG1220Q	20	1.666	1/2	1 1/4	1/2	0.32	CP
WG1230Q	30	2.500	3/4	1 1/2	5/8	0.38	CP
WG1240	40	3.333	3/4	1 3/4	5/8	0.80	CPL,C

**4 Quadruple Steel -- 18 26' Helix Angle Woms**

**W12-Q**



CWE



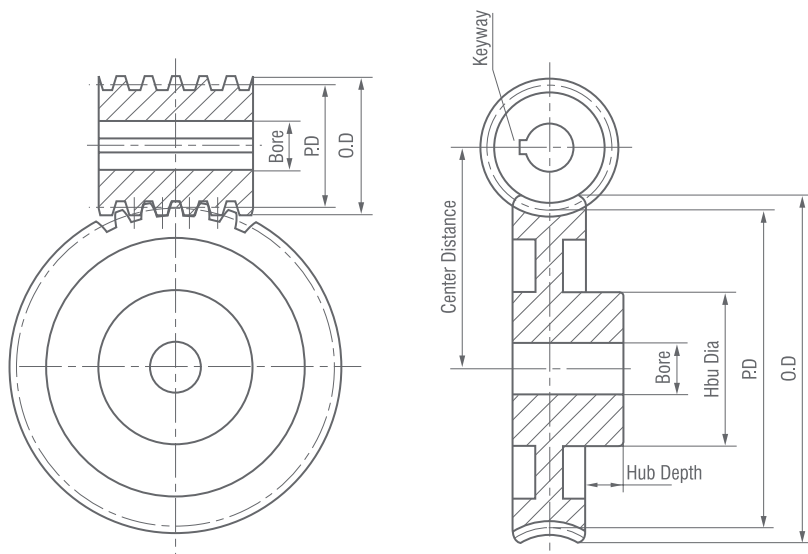
CPL



## ***Worm and Worm Gears***

**14 1/2°** Pressure Angle

**16DP**



**CSP**

**Right Hand Single Thread -- Stocked Right Hand Only**

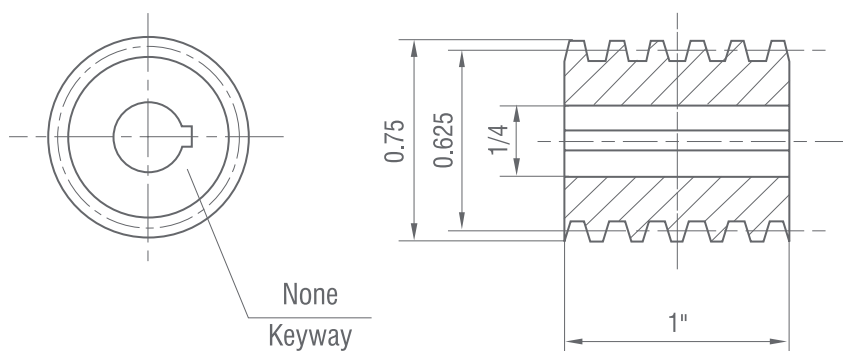
**16DP 5/16" Face**

**Cast Iron and Bronze**

PART NUMBER	Z	PD	Bore	Hub Dia	Hub Depth	wt Lbs	Style
WG1620	20	1.250	1/4	5/8	5/16	0.13	CPL
WG1630	30	1.875	5/16	3/4	3/8	0.28	CPL,CSP
WG1640	40	2.500	5/16	3/4	3/8	0.42	CPL,CSP
WG1650	50	3.125	3/8	7/8	7/16	0.50	CPL,CSP

**1 Single Steel -- 5° 43' Helix Angle Worms**

**W16-S**



**CWE**



**CPL**

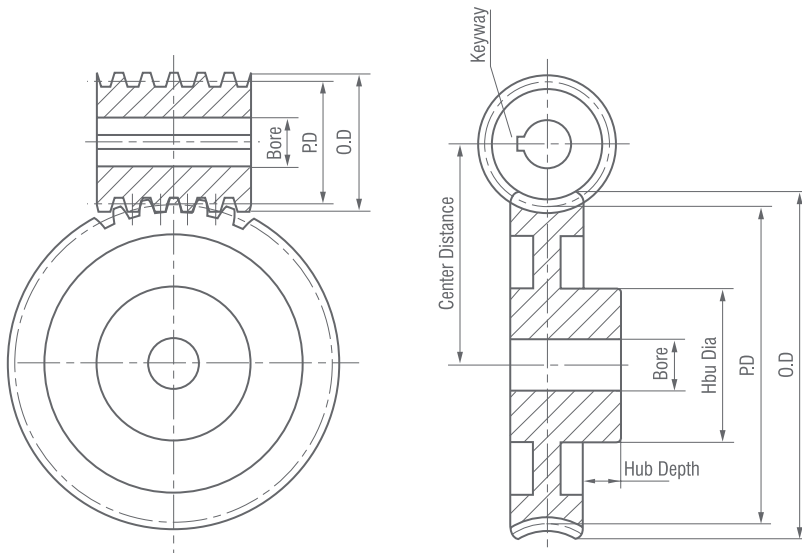


## ***Worm and Worm Gears***

**14 1/2°**

**Pressure Angle**

**16DP**



**CPL**

**Right Hand Double Thread -- Stocked Right Hand Only**

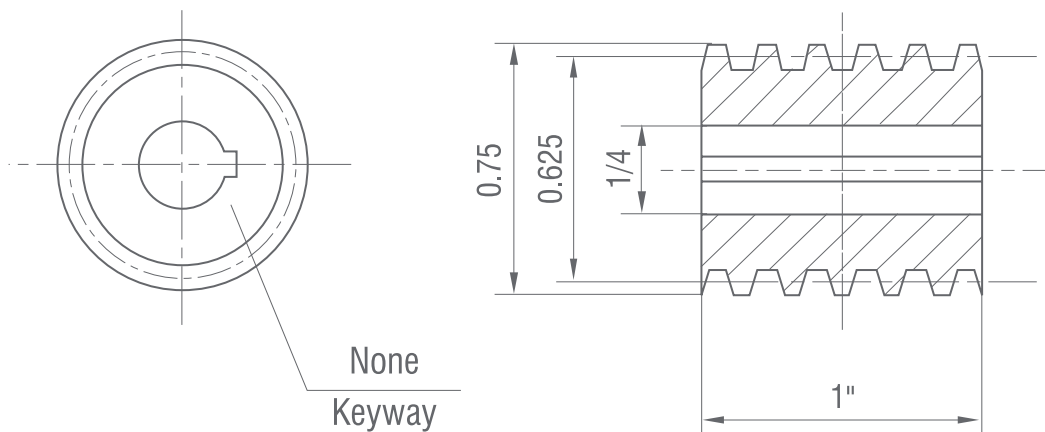
**16DP 5/16" Face**

**Bronze**

PART NUMBER	Z	PD	Bore	Hub Dia	Hub Depth	wt Lbs	Style
WG1620D	20	1.250	1/4	5/8	5/16	0.14	CPL

**2 Double Steel -- 11° 19' Helix Angle Worm**

**W16-D**

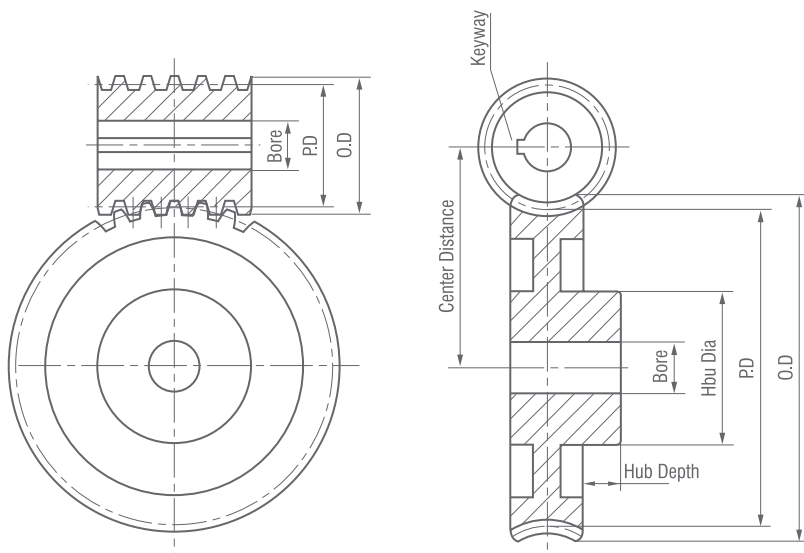




## ***Worm and Worm Gears***

**14 1/2°** Pressure Angle

**16DP**



CPL

**Right Hand Quadruple Thread -- Stocked Right Hand Only**

**16DP 5/16" Face**

**Bronze**

PART NUMBER	Z	PD	Bore	Hub Dia	Hub Depth	wt Lbs	Style
WG1620	20	1.25	1/4	5/8	5/16	0.14	CPL

**4 Double Steel -- 21 48' Helix Angle Worms**

**W16-Q**

