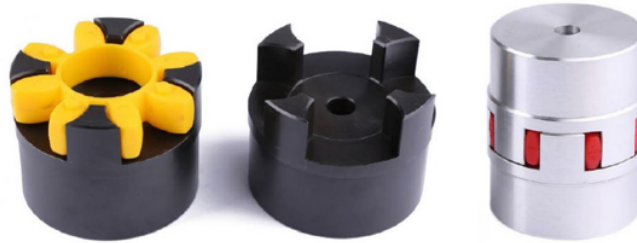
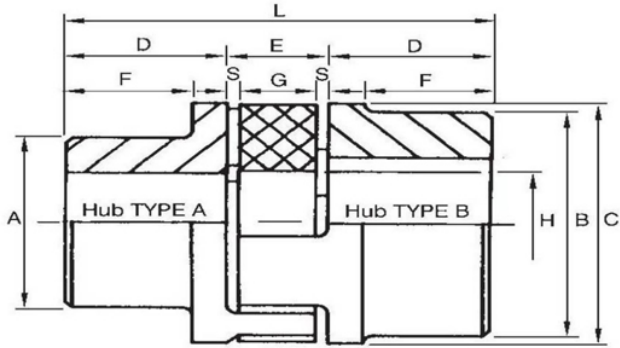




**GE Series Elastomeric Couplings**



Coupling size	Max speed RPM	Nominal torque Tn Nm	Reversal Torque Tn Nm	Torsional stiffness kNm/Rad				Maximum misalignment		
				1.0 Tn	0.75 Tn	0.5 Tn	0.25 Tn	Angular °	Radial	Axial
GE19A-24B	14000	10	2.6	0.68	0.57	0.44	0.28	1.2°	0.2	1.2
GE24A-32B	10600	35	9	2.19	1.82	1.4	0.9	0.9°	0.2	1.4
GE28A-38B	8500	95	25	5.2	4.31	3.32	2.12	0.9°	0.25	1.5
GE38A-45B	7100	190	49	10	8.3	6.39	4.08	1.0°	0.28	1.8
GE42A-55B	6000	265	69	17	14.11	10.68	6.94	1.0°	0.32	2
GE48A-60B	5600	310	81	20	16.59	12.77	8.16	1.1°	0.36	2.1
GE55A-70B	4750	375	98	21.99	18.25	14.05	8.98	1.1°	0.38	2.2
GE65A-75B	4250	425	111	28.2	23.39	18.01	11.51	1.2°	0.42	2.6
GE75A-90B	3550	975	254	67.99	56.41	43.44	27.75	1.2°	0.48	3
GE90A-100B	2800	2400	624	110	96.26	70.27	44.89	1.2°	0.5	3.4

Coupling size	Bore diameters - mm HUB 'A'		Bore diameters - mm HUB 'B'		DIMENSIONS										Weight of couplings			Coupling inertia KG CM		
	Min	Max	Min	Max	A	B	C	D	E	F	G	H	L	HUB A-A	HUB A-B	HUB B-B	HUB A-A	HUB A-B	HUB B-B	
	GE19A-24B	-	19	-	24	30	40	40	25	16	19	12	18	66	0.27	0.3	0.33	0.7	0.8	0.8
GE24A-32B	-	24	-	32	40	55	55	30	18	24	14	27	78	0.61	0.78	0.96	2.5	3	3.5	
GE28A-38B	-	28	-	38	48	65	65	35	20	27.5	15	30	90	0.97	1.29	1.61	6	7	8	
GE38A-45B	-	38	-	45	66	78	80	45	24	36.5	18	38	114	2.08	2.37	2.66	17	20	23	
GE42A-55B	-	42	-	55	75	94	95	50	26	40	20	46	126	3.21	3.61	4.01	40	50	60	
GE48A-60B	-	48	-	60	85	104	105	56	28	45	21	51	140	4.41	4.97	5.53	60	80	100	
GE55A-70B	-	55	-	70	98	118	120	65	30	52	22	60	160	6.64	7.37	8.11	120	160	200	
GE65A-75B	-	65	-	75	115	134	135	75	35	61	26	68	185	10.13	10.89	11.65	250	310	370	
GE75A-90B	-	75	-	90	135	158	160	85	40	69	30	80	210	16.03	17.73	19.43	540	680	820	
GE90A-100B	38	90	38	100	160	180	200	100	45	81	34	100	245	28.45	30.25	32.1	1400	1590	1780	
GE19AA-24BA	-	19	12	24	32	40	40	25	16	19	12	18	66	0.12	0.13	0.14	0.3	0.4	0.4	
GE24AA-32BA	6	24	14	28	40	55	55	30	18	24	14	27	78	0.24	0.26	0.28	0.8	0.9	1	
GE28AA-38BA	7	28	16	38	48	65	65	35	20	27.5	15	30	90	0.39	0.46	0.53	2	2.4	2.8	
GE38AA-45BA	8	38	20	45	66	78	80	45	24	36.5	18	38	114	0.82	0.89	0.95	7	7.5	8	