

推荐安装尺寸:

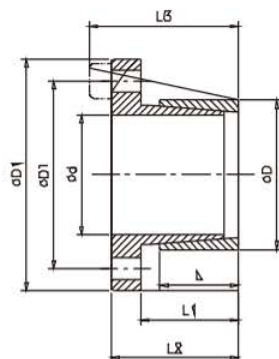
Recommended Dimensions:

轴: h8 Shaft: h8

毂: H8 Hub: H8

符合JB/T7934 Z14胀套

Satisfy JB/T7934 Z14 Locking Device



标准胀套不含螺栓,如需要螺栓请特别提出

The standard locking device doesn't include bolts. Please contact us if you need.

尺寸 Dimensions								传递的轴向力 Transmitted Axial Force	传递扭矩 Transmitted Torque	接触面压强 Contacting Pressure		DIN912锁紧螺钉8.8级(1) DIN912 Locking Screw 8.8 (1)		
Φd	ΦD	ΦD1	ΦDT	L	L1	L2	L3			轴 Shaft	毂 Hub	数量 n	规格 Size	锁紧扭矩 Locking Torque
mm	mm	mm	mm	mm	mm	mm	mm	P	P1	Ts				
								Ft	Mt	N/mm ²	N/mm ²	Nm		
14								9	64	109	46	4	M4	2.9
16									73	96				
18	25	42	33	16	20	26	30		82	85				
19									87	81				
20								15	152	127	65	4	M5	6
22	30	50	39	16	20	26	31		167	116				
24									182	106				
25								15	190	102	57	4	M5	6
28	36	55	45	16	20	26	31		213	91				
30									228	85				
32								5	243	80	50	4	M5	6
35	42	62	51	16	20	28	33		266	73				
36									274	71				
38	44	66	54	16	20	28	34	21	400	93	65	4	M6	10
40								21	421	88	61	4	M6	10
42	48	70	58	16	20	28	34		442	84				
45								40	890	118	79	4	M8	25
48	55	82	67	20	25	35	43		949	110				
50								40	989	106	72	4	M8	25
55	62	89	74	20	25	35	43		1088	96				
60								40	1187	88	63	4	M8	25
65	72	99	84	20	25	35	43		1286	82				