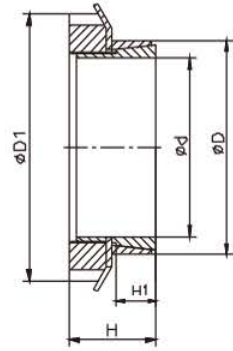


推荐安装尺寸:

Recommended Dimensions:

轴: h8 Shaft: h8

毂: H8 Hub: H8



类似JB/T 7934 Z19A标准

Similar to JB/T 7934 Z19A Standard

尺寸 Dimensions					传递的轴向力 Transmitted Axial Force	传递扭矩 Transmitted Torque	接触面压强 Contacting Pressure		开槽螺母 Slotted Nut		
							轴Shaft	毂 Hub	数量 n	规格 Size	锁紧扭矩 Locking Torque
d	D	D1	H	h1	Ft	Mt	P	P1			
mm	mm	mm	mm	mm	KN	Nm	N/mm <sup>2</sup>	N/mm <sup>2</sup>			Nm
14	25	32	17	6.5	7	52	241	135	1	M20x1	95
15	25	32	17	6.5	7	56	225	135	1	M20x1	95
16	25	32	17	6.5	7	60	211	135	1	M20x1	95
18	30	38	17.5	6.5	10	91	256	154	1	M25x1.5	160
19	30	38	18	6.5	10	96	242	154	1	M25x1.5	160
20	30	38	18	6.5	10	102	230	154	1	M25x1.5	160
24	35	45	18	6.5	12	139	218	150	1	M30x1.5	220
25	35	45	18	6.5	12	144	210	150	1	M30x1.5	220
28	40	52	18	6.5	15	215	248	174	1	M35x1.5	340
30	40	52	20	8	15	230	188	141	1	M35x1.5	340
35	45	58	22	8	19	331	199	155	1	M40x1.5	480
40	50	65	25	10	24	477	176	141	1	M45x1.5	680
45	55	70	26	10	27	617	180	147	1	M50x1.5	870
48	60	75	26	10	28	669	171	137	1	M55x2	970
50	60	75	26	10	28	697	164	137	1	M55x2	970
55	65	80	27	12	29	796	129	109	1	M60x2	1100
60	70	85	29	12	32	946	129	111	1	M65x2	1300