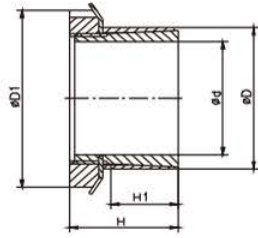


推荐安装尺寸:

Recommended Dimensions:

轴: h8 Shaft: h8

毂: H8 Hub: H8



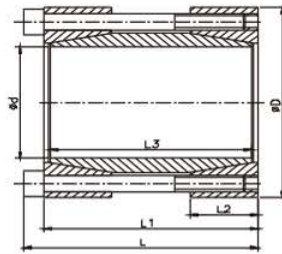
类似JB/T 7934 Z19B标准

Similar to JB/T 7934 Z19B Standard

尺寸 Dimensions					传递的轴向力 Transmitted Axial Force	传递扭矩 Transmitted Torque	接触面压强 Contacting Pressure		开槽螺母 Slotted Nut		
							轴 Shaft	毂 Hub	数量 n	规格 Size	锁紧扭矩 Locking Torque
d	D	D1	H	H1	Ft	Mt	P	P1			
mm	mm	mm	mm	mm	KN	Nm	N/mm ²	N/mm ²			Nm
15	25	32	31	20	9	77	91	55	1	M20x1	95
18	30	38	33	21	13	125	98	59	1	M25x1.5	160
19	30	38	33	21	13	132	93	59	1	M25x1.5	160
20	30	38	33	21	13	139	88	59	1	M25x1.5	160
24	35	45	38	25	15	202	74	51	1	M30x1.5	220
25	35	45	38	25	15	210	71	51	1	M30x1.5	220
28	40	52	44	28	20	312	76	53	1	M35x1.5	340
30	40	52	44	28	20	335	71	53	1	M35x1.5	340
35	45	58	45	28	25	483	75	58	1	M40x1.5	480
40	50	65	46	28	31	696	82	66	1	M45x1.5	680
45	55	70	47	28	36	902	84	69	1	M50x1.5	870
50	60	75	47	28	37	1014	77	64	1	M55x2	970
55	65	80	48	28	38	1158	73	61	1	M60x2	1100
60	70	85	50	28	41	1379	73	62	1	M65x2	1300

推荐安装尺寸:

Recommended Dimensions:



轴: h8 Shaft: h8

尺寸 Dimensions						传递的轴向力 Transmitted Axial Force	传递扭矩 Transmitted Torque	接触面压强 Contacting Pressure	GB70-85 12.9级锁紧螺钉 GB70-85-12.9 Locking Screw		
								轴 Shaft	数量 n	规格 Size	锁紧扭矩 Locking Torque
d	D	L	L1	L2	L3	Ft	Mt	P			
mm	mm	mm	mm	mm	mm	KN	Nm	N/mm ²			Nm
15	45	56	50	16	44	21	158	188	4	M6X45	17
16	50	56	50	16	44	21	168	176	4	M6X45	17
17	50	56	50	16	44	21	179	166	4	M6X45	17
18	50	56	50	16	44	21	190	157	4	M6X45	17
19	50	56	50	16	44	21	200	149	4	M6X45	17
20	50	56	50	16	44	21	211	141	4	M6X45	17
24	55	66	60	18.5	54	32	378	144	6	M6X55	17
25	55	66	60	18.5	54	32	394	138	6	M6X55	17
28	60	66	60	18.5	54	32	442	123	6	M6X55	17