

推荐安装尺寸: Recommended Dimensions: 轴: h8 Shaft: h8

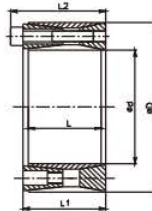
尺寸 Dimensions						传递的轴向力 Transmitted Axial Force	传递扭矩 Transmitted Torque	接触面压强 Contacting Pressure		GB70-85 12.9级锁紧螺钉 GB70-85-12.9 Locking Screw		
d	D	L	L1	L2	L3			Ft	Mt	轴 Shaft	数量 n	规格 Size
mm	mm	mm	mm	mm	mm	KN	Nm	P	Ts	Nm		
									N/mm ²			
30	60	66	60	18.5	54	32	473	115	6	M6X55	17	
32	63	66	60	18.5	54	32	505	108	6	M6X55	17	
35	75	83	75	22	67	39	682	98	4	M8X70	42	
38	75	83	75	22	67	39	741	90	4	M8X70	42	
40	75	83	75	22	67	39	780	86	4	M8X70	42	
42	78	83	75	22	67	39	819	82	4	M8X70	42	
45	85	93	85	24.5	76	59	1317	101	6	M8X80	42	
48	90	93	85	24.5	76	59	1405	95	6	M8X80	42	
50	90	93	85	24.5	76	59	1463	91	6	M8X80	42	
55	94	93	85	24.5	76	78	2147	110	8	M8X80	42	
60	100	93	85	24.5	76	78	2343	101	8	M8X80	42	
65	105	93	85	24.5	76	78	2538	93	8	M8X80	42	
70	115	110	100	29	90	93	3239	87	6	M10X95	83	
75	120	110	100	29	90	93	3471	81	6	M10X95	83	

推荐安装尺寸:
Recommended Dimensions:

轴: h8 Shaft: h8

毂: H8 Hub: H8

符合JB/T 7934 Z4标准
Satisfy JB/T 7934 Z4 Standard



尺寸 Dimensions					传递的轴向力 Transmitted Axial Force	传递扭矩 Transmitted Torque	接触面压强 Contacting Pressure		DIN912-12.9级锁紧螺钉 DIN912-12.9 Locking Screw		
d	D	L	L1	L2			Ft	Mt	轴 Shaft	毂 Hub	数量 n
mm	mm	mm	mm	mm	KN	Nm	P	P1	Ts	Nm	
							N/mm ²				
70	120	56	62	74	197	6850	201	117	8	M12X55	145
80	130	56	62	74	291	11650	263	162	12	M12X55	145
90	140	56	62	74	290	13000	234	150	12	M12X55	145
100	160	74	80	94	389	19700	213	133	12	M14X70	230
110	170	74	80	94	483	26600	242	157	14	M14X70	230
120	180	74	80	94	483	28900	222	148	15	M14X70	230
130	190	74	80	94	483	31200	205	140	15	M14X70	230
140	200	74	80	94	574	40200	227	159	17	M14X70	230
150	210	74	80	94	574	42900	212	152	18	M14X70	230
160	230	88	94	110	800	64000	227	158	17	M16X80	355
170	240	88	94	110	800	67800	214	152	18	M16X80	355
180	250	88	94	110	923	83000	235	170	20	M16X80	355
190	260	88	94	110	923	88000	223	163	21	M16X80	355
200	270	88	94	110	1050	105000	242	179	23	M16X80	355
220	300	110	116	134	1120	123000	189	138	21	M18X100	485
240	320	110	116	134	1280	153000	198	148	24	M18X100	485
250	330	110	116	134	1282	160200	205	157	27	M18X100	485
260	340	110	116	134	1430	186000	205	157	27	M18X100	485
280	370	130	136	156	1650	230000	192	145	24	M20X110	690
300	390	130	136	156	1650	245000	179	138	24	M20X110	690