

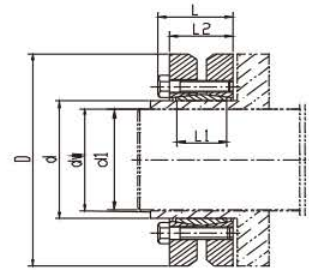
Heavy-loaded Shrink Discs

类似JB/T 7934 Z7C标准

Similar to JB/T 7934 Z7C Standard

尺寸 Dimensions							传递的轴向力 Transmitted Axial Force	传递扭矩 Transmitted Torque	DIN931-10.9级锁紧螺钉 DIN931-10.9 Locking Screw		
Φd	ΦD	Φdw	L1	L2	L	C(dw-d1)最大 间隙C(dw-d1) Max. Clearance			数量 n	规格 Size	锁紧扭矩 Locking Torque
mm	mm	mm	mm	mm	mm	mm	KN	Nm			Ts
										Nm	
400	680	315	188	212	227	0.111	5464	860625	24	M24X140	840
		320					5541	886500			
		330					5761	950625			
420	690	330	214	238	253	0.111	6811	1123875	30	M24X150	840
		340					7068	1201500			
		350					7329	1282500			
440	750	340	224	252	269	0.111	6161	1047420	24	M27X170	1100
		350					6393	1118700			
		360					6622	1191960			
460	770	360	224	252	269	0.111	7260	1306800	28	M27X170	1100
		370					7599	1405800			
		380					7816	1485000			
480	800	380	246	274	291	0.111	7998	1519650	30	M27X180	1100
		390					8255	1609740			
		400					8514	1702800			
500	850	400	246	274	291	0.123	8663	1732500	32	M27X180	1100
		410					8886	1821600			
		420					9146	1920600			

Light-Loaded Shrink Discs



类似JB/T 7934 Z7A标准

Similar to JB/T 7934 Z7A Standard

尺寸 Dimensions							传递的轴向力 Transmitted Axial Force	传递扭矩 Transmitted Torque	DIN931-10.9级锁紧螺钉 DIN931-10.9 Locking Screw		
Φd	ΦD	Φdw	L1	L2	L	C(dw-d1)最大 间隙 Max. Clearance C(dw-d1)			数量 n	规格 Size	锁紧扭矩 Locking Torque
mm	mm	mm	mm	mm	mm	mm	KN	Nm			Ts
										Nm	
125	185	95	39	51	58	0.069	278	13200	8	M10X40	59
		100					303	15125			
		105					329	17250			
140	220	110	39	51	58	0.069	336	18500	9	M10X40	59
		120					388	23300			
		125					410	25625			
155	245	130	39	51	58	0.069	462	30000	11	M10X40	59
		135					489	33000			
		140					518	36250			
165	260	135	46	62	70	0.079	593	40000	10	M12X50	100
		140					629	44000			
		145					664	48125			
175	275	145	46	62	70	0.079	672	48750	11	M12X50	100
		150					707	53000			
		155					742	57500			

Light-Loaded Shrink Discs

类似JB/T 7934 Z7A标准

Similar to JB/T 7934 Z7A Standard

尺寸 Dimensions							传递的轴向力 Transmitted Axial Force	传递扭矩 Transmitted Torque	DIN931-10.9级锁紧螺钉 DIN931-10.9 Locking Screw		
Φd	ΦD	Φdw	L1	L2	L	C(dw-d1)最大 间隙 Max. Clearance C(dw-d1)			数量 n	规格 Size	锁紧扭矩 Locking Torque
mm	mm	mm	mm	mm	mm	mm	Ft	Mt			Ts
							KN	Nm	Nm		
185	295	155	46	62	70	0.79	752	58250	12	M12X50	100
		160					786	62875			
		165					818	67500			
		165					1064	87750			
195	315	170	56	72	80	0.079	996	84625	15	M12X55	100
		175					1036	90625			
		175					1057	92500			
		180					1104	99375			
200	330	185	56	72	80	0.079	1142	105625	16	M12X55	100
		180					1150	103500			
		190					1230	116875			
		200					1313	131250			
220	345	200	66	84	94	0.079	1413	141250	10	M16X65	250
		210					1518	159375			
		215					1564	168125			
		220					1693	186250			
240	370	230	66	84	94	0.079	1793	206250	12	M16X65	250
		235					1840	216250			
		230					1859	213750			
		240					1969	236250			
260	395	250	72	92	102	0.09	2080	260000	14	M16X70	250
		250					2150	268750			
		260					2250	292500			
		270					2361	318750			
280	425	270	84	104	114	0.09	2407	325000	16	M16X75	250
		280					2536	355000			
		290					2638	382500			
		290					2586	375000			
300	460	300	84	104	114	0.09	2700	405000	18	M16X75	250
		305					2762	421250			
		300					3100	465000			
		310					3156	481250			
320	495	310	84	106	116	0.09	3226	500000	20	M16X75	250
		300					3000	450000			
		310					3129	485000			
		320					3242	518750			
340	535	320	84	106	116	0.101	3398	543750	21	M16X75	250
		330					3469	563750			
		330					3538	583750			
		340					3829	631750			
350	545	350	100	122	135	0.101	3971	675000	18	M20X100	490
		350					4121	721250			
		340					4044	687500			
		350					4193	733750			
360	555	360	100	122	135	0.101	4347	782500	20	M20X100	490
		350					4129	722500			
		360					4285	771250			
		370					4426	818750			
380	585	370	112	136	149	0.101	4574	846250	22	M20X100	490
		380					4730	898750			
		390					4885	952500			
		390					5385	1050000			
390	595	400	112	136	149	0.101	5563	1112500	24	M20X100	490
		410					5707	1170000			
		410					5433	1113750			
		420					5601	1176250			
400	615	425	112	136	149	0.111	5682	1207500	28	M20X110	490
		350					5800	1232500			
		430					5890	1266250			
		440					6057	1332500			