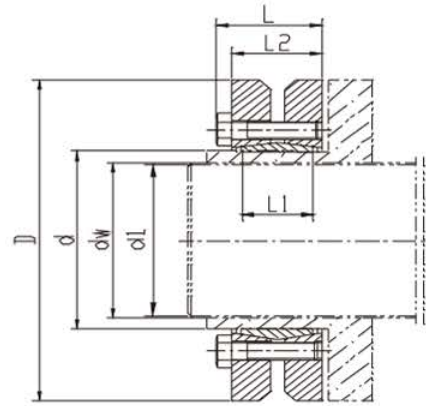


Heavy-loaded Shrink Discs



类似JB/T 7934 Z7C标准
Similar to JB/T 7934 Z7C Standard

尺寸 Dimensions							传递的轴向力 Transmitted Axial Force	传递扭矩 Transmitted Torque	DIN931-10.9级锁紧螺钉 DIN931-10.9 Locking Screw			
Φd	ΦD	Φdw	L1	L2	L	C(dw-d1)最大 间隙C(dw-d1) Max. Clearance			数量 n	规格 Size	锁紧扭矩 Locking Torque	
											Ts	
mm	mm	mm	mm	mm	mm	mm	KN	Nm	Nm			
140	230	95	60	74	82	0.069	488	23175	12	M12X55	100	
		100					529	26438				
		105					568	29813				
155	263	105	66	84	92	0.069	569	29858	15	M12X60	100	
		110					634	34875				
		115					665	38250				
165	290	115	72	88	98	0.069	802	46125	10	M16X65	250	
		120					863	51750				
		125					913	57038				
175	300	125	72	88	98	0.079	1260	78750	15	M16X80	250	
		130					1359	88308				
		135					1417	95625				
185	330	135	92	112	122	0.079	1200	81000	14	M16X80	250	
		140					1414	99000				
		145					1490	108000				
195	350	140	92	112	122	0.079	1366	95625	14	M16X80	250	
		150					1388	104063				
		155					1452	112500				
200	350	145	92	112	122	0.079	1971	142875	15	M16X80	250	
		150					2040	153000				
		155					2127	164813				
220	370	160	114	134	144	0.079	2180	174375	20	M16X90	250	
		165					2400	198000				
		170					2621	222750				
240	405	170	120	144	157	0.079	2819	239625	15	M20X100	490	
		180					3000	270000				
		190					3174	301500				
260	430	190	136	160	173	0.09	3375	320625	18	M20X110	490	
		200					3600	360000				
		210					3804	399375				
280	460	210	148	172	185	0.09	3654	383625	21	M20X120	490	
		220					3845	423000				
		230					3854	443250				
300	485	230	152	176	189	0.09	3336	383625	22	M20X120	490	
		240					3525	423000				
		245					3618	443250				
320	520	240	160	184	197	0.09	3544	425250	24	M20X130	490	
		250					3735	466875				
		260					3903	507375				
340	570	250	176	200	215	0.101	4406	550688	21	M24X130	840	
		260					4587	596250				
		270					4817	650250				
350	580	270	176	200	215	0.101	4633	625500	21	M24X130	840	
		280					4854	679500				
		285					4966	707625				
360	590	280	180	204	219	0.101	4918	688500	22	M24X140	840	
		290					5144	745875				
		295					5255	775125				
380	645	290	180	204	219	0.101	4795	695250	22	M24X140	840	
		300					5010	751500				
		310					5219	808875				
390	660	300	188	212	227	0.101	5310	796500	24	M24X140	840	
		310					5531	857250				
		320					5727	916313				

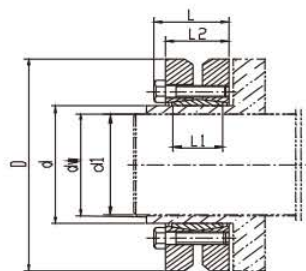
Heavy-loaded Shrink Discs

类似JB/T 7934 Z7C标准

Similar to JB/T 7934 Z7C Standard

尺寸 Dimensions							传递的轴向力 Transmitted Axial Force	传递扭矩 Transmitted Torque	DIN931-10.9级锁紧螺钉 DIN931-10.9 Locking Screw		
Φd	ΦD	Φdw	L1	L2	L	C(dw-d1)最大 间隙C(dw-d1) Max. Clearance			数量 n	规格 Size	锁紧扭矩 Locking Torque
mm	mm	mm	mm	mm	mm	mm	Ft KN	Mt Nm		Ts Nm	
400	680	315	188	212	227	0.111	5464	860625	24	M24X140	840
		320					5541	886500			
		330					5761	950625			
420	690	330	214	238	253	0.111	6811	1123875	30	M24X150	840
		340					7068	1201500			
		350					7329	1282500			
440	750	340	224	252	269	0.111	6161	1047420	24	M27X170	1100
		350					6393	1118700			
		360					6622	1191960			
460	770	360	224	252	269	0.111	7260	1306800	28	M27X170	1100
		370					7599	1405800			
		380					7816	1485000			
480	800	380	246	274	291	0.111	7998	1519650	30	M27X180	1100
		390					8255	1609740			
		400					8514	1702800			
500	850	400	246	274	291	0.123	8663	1732500	32	M27X180	1100
		410					8886	1821600			
		420					9146	1920600			

Light-Loaded Shrink Discs



类似JB/T 7934 Z7A标准

Similar to JB/T 7934 Z7A Standard

尺寸 Dimensions							传递的轴向力 Transmitted Axial Force	传递扭矩 Transmitted Torque	DIN931-10.9级锁紧螺钉 DIN931-10.9 Locking Screw		
Φd	ΦD	Φdw	L1	L2	L	C(dw-d1)最大 间隙 Max. Clearance C(dw-d1)			数量 n	规格 Size	锁紧扭矩 Locking Torque
mm	mm	mm	mm	mm	mm	mm	Ft KN	Mt Nm		Ts Nm	
125	185	95	39	51	58	0.069	278	13200	8	M10X40	59
		100					303	15125			
		105					329	17250			
140	220	110	39	51	58	0.069	336	18500	9	M10X40	59
		120					388	23300			
		125					410	25625			
155	245	130	39	51	58	0.069	462	30000	11	M10X40	59
		135					489	33000			
		140					518	36250			
165	260	135	46	62	70	0.079	593	40000	10	M12X50	100
		140					629	44000			
		145					664	48125			
175	275	145	46	62	70	0.079	672	48750	11	M12X50	100
		150					707	53000			
		155					742	57500			